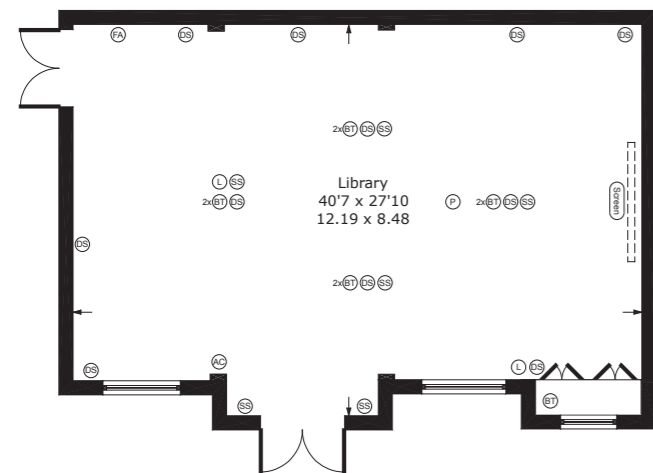
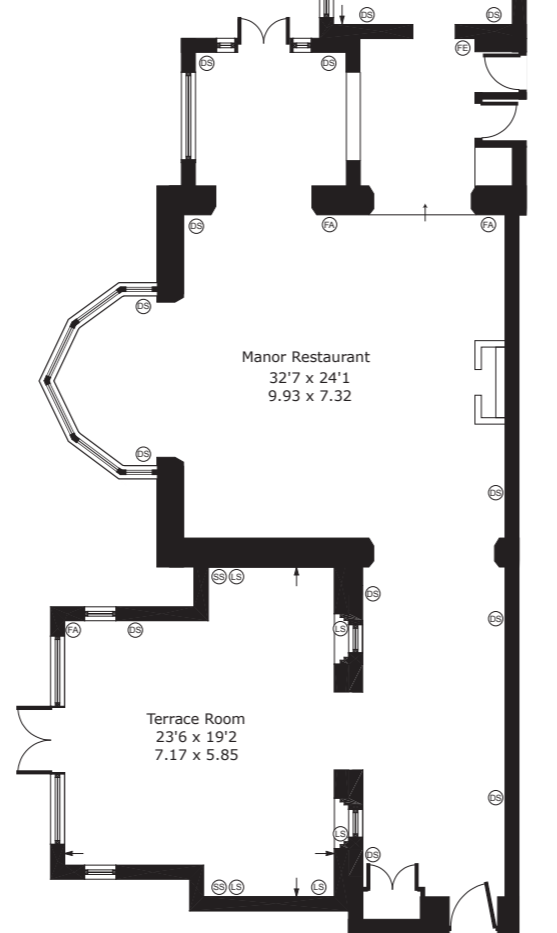
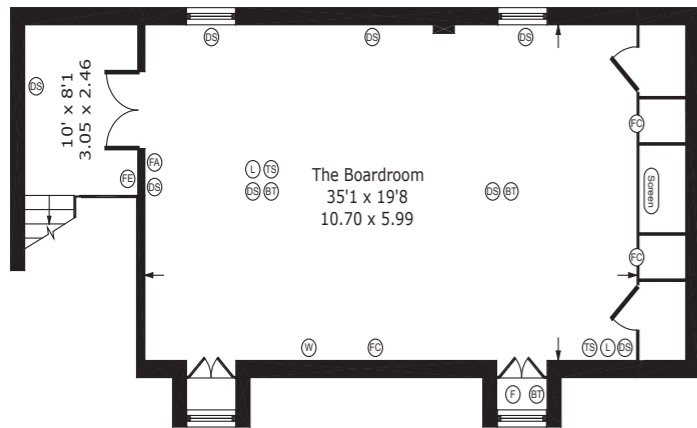
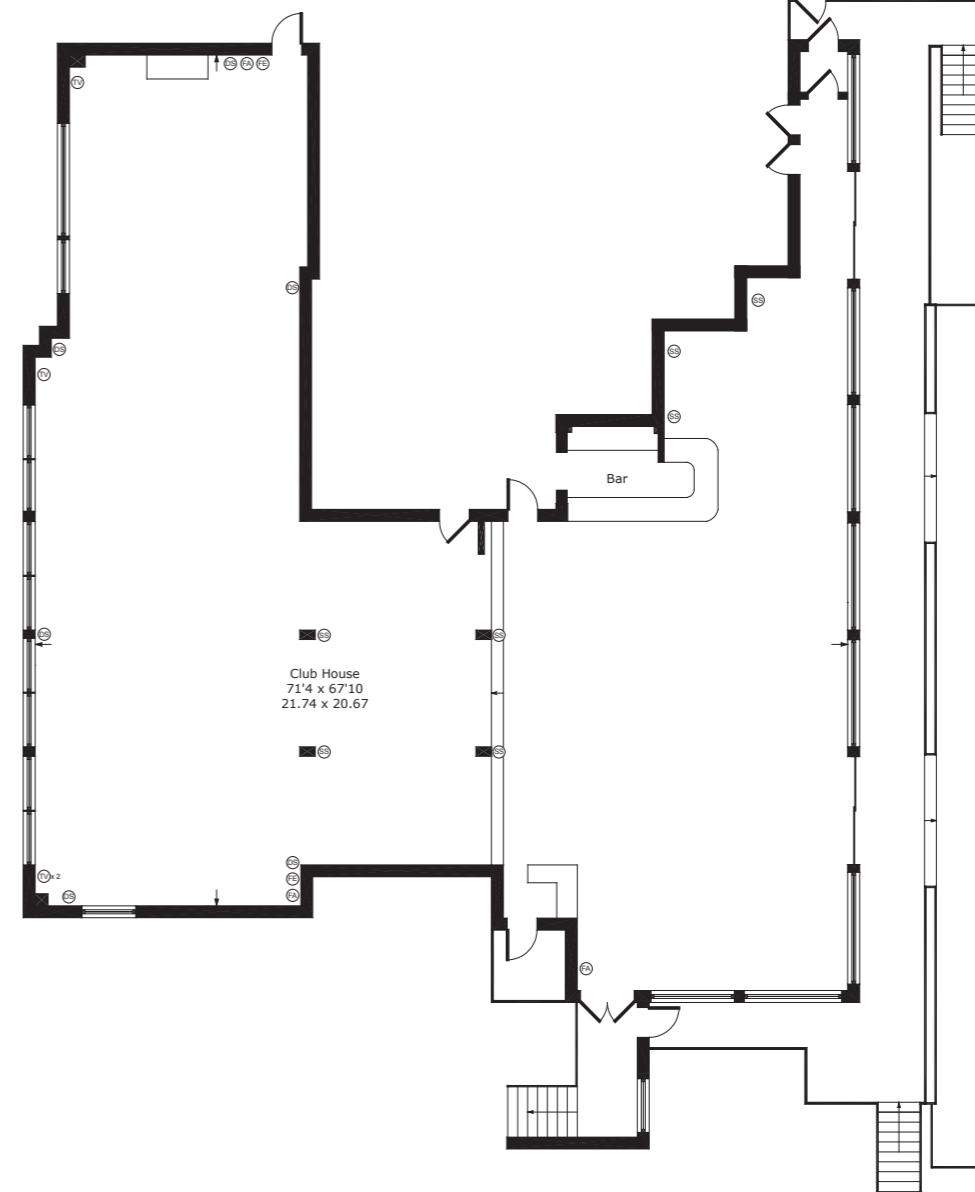
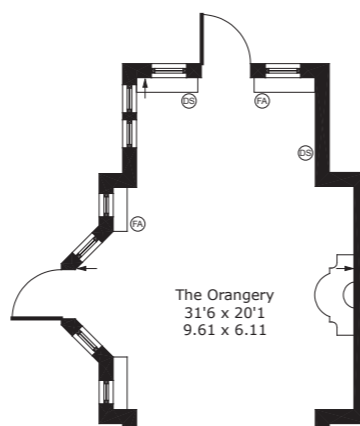
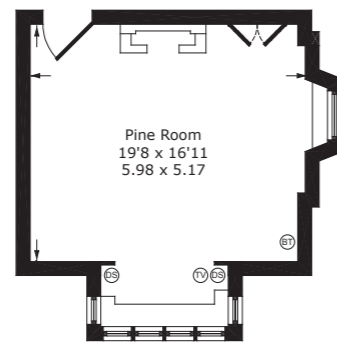
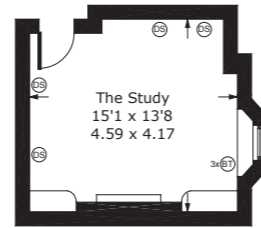
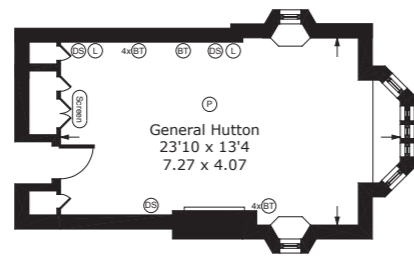
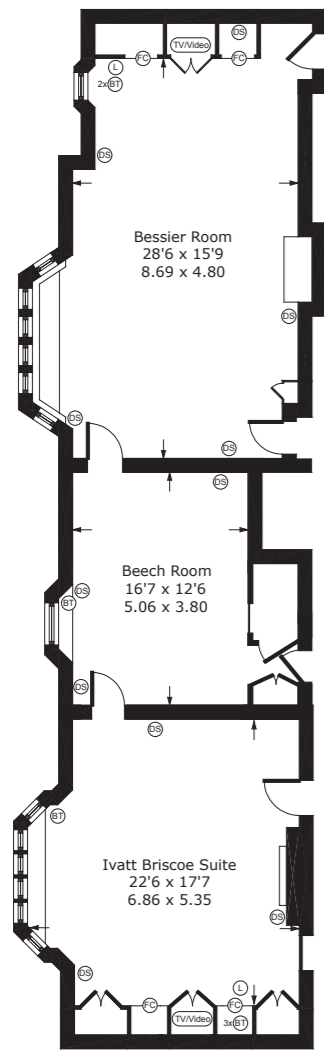




- Ⓧ Double Socket
- Ⓝ Single Socket
- Ⓛ Flip Chart
- Ⓦ Whiteboard
- Ⓣ Telephone Point / Broadband
- Ⓣ Television Point
- Ⓛ Fire Alarm
- Ⓛ Fire Extinguisher
- Ⓛ Touch Screen
- Ⓛ Air Conditioning Control
- Ⓛ Fridge
- Ⓛ Projector
- Ⓛ Laptop Input



Foxhills Conference Suite

Approximate Gross Internal Floor Area :

General Hutton	28 m ² / 302 ft ²
Beech Room	22 m ² / 237 ft ²
Club house	334 m ² / 3599 ft ²
Pine Room	35 m ² / 377 ft ²
Ivatt Briscoe Suite	36 m ² / 388 ft ²
Library	100 m ² / 1074 ft ²
Bessier Room	49 m ² / 522 ft ²
Terrace Room	37 m ² / 397 ft ²
The Boardroom	74 m ² / 796 ft ²
The Orangery	45 m ² / 488 ft ²
Dining Hall	111 m ² / 1199 ft ²
The Study	18 m ² / 194 ft ²
Total	889 m² / 9573 ft²