



SLS

DUBAI

FACT SHEET

LOCATION

Located in the Downtown district, SLS Dubai offers incomparable panoramic views over the city. Voted as the top Middle East hotel of the Condé Nast Traveler's Reader's Choice Awards, SLS Dubai provides unobstructed views of the iconic Burj Khalifa, along with a clear overhead of the calming Dubai Creek.

The impressive 75 story tower makes SLS Dubai one of the tallest hotels and residences in the region. Developed in collaboration with international architecture firm Aedas, SLS Dubai comprises of 254 expertly designed hotel rooms, 299 hotel apartments and 371 residential units by acclaimed designer Paul Bishop. In true SLS fashion, the hotel features contemporary art, sleek accents & exceptional fittings that are unique characteristics of the brand's DNA.

A STONE'S THROWAWAY (IN MINUTES)

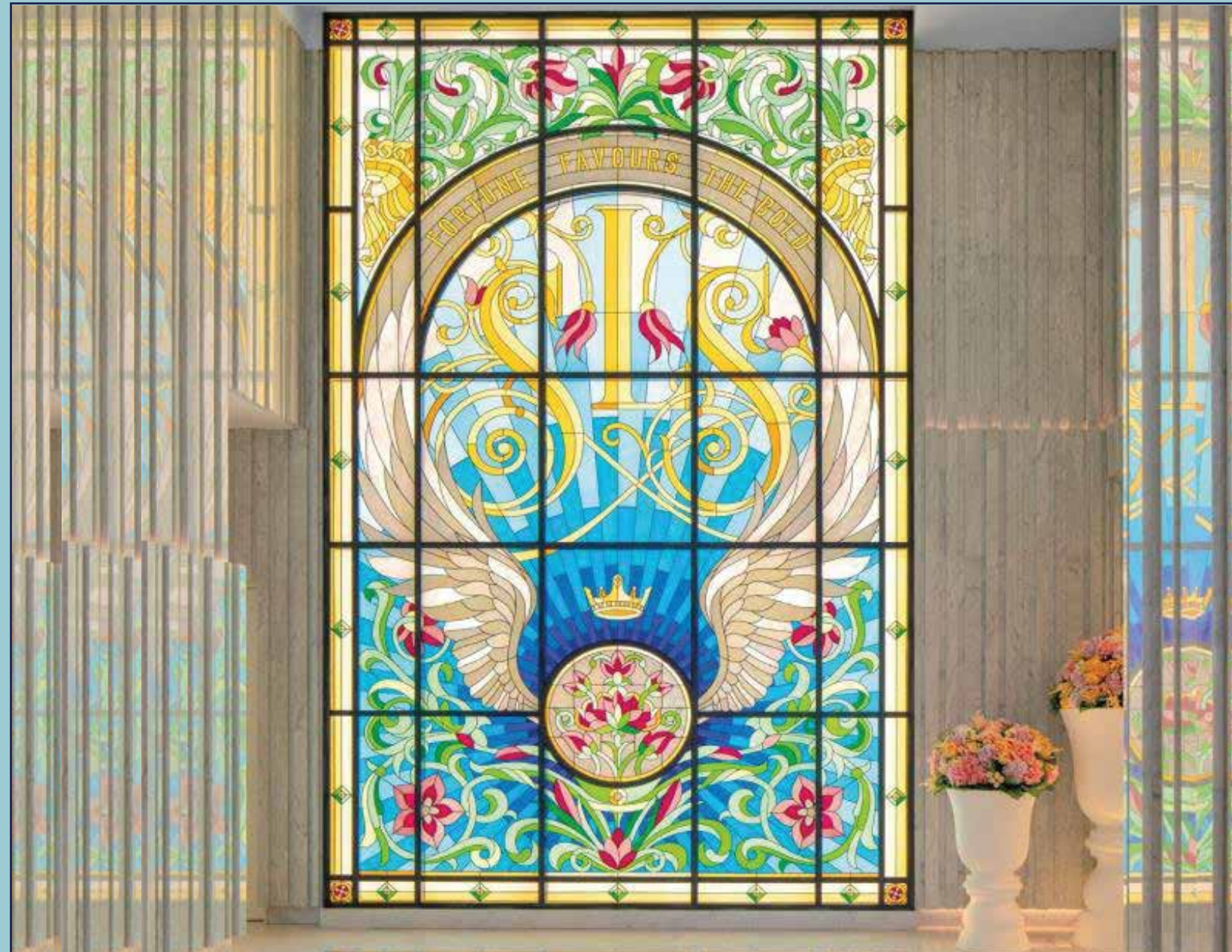
3 Minutes: To Dubai Mall and Burj Khalifa

5 Minutes: To Dubai Design District and 7-10 minutes to DIFC

10 minutes to Dubai International Airport

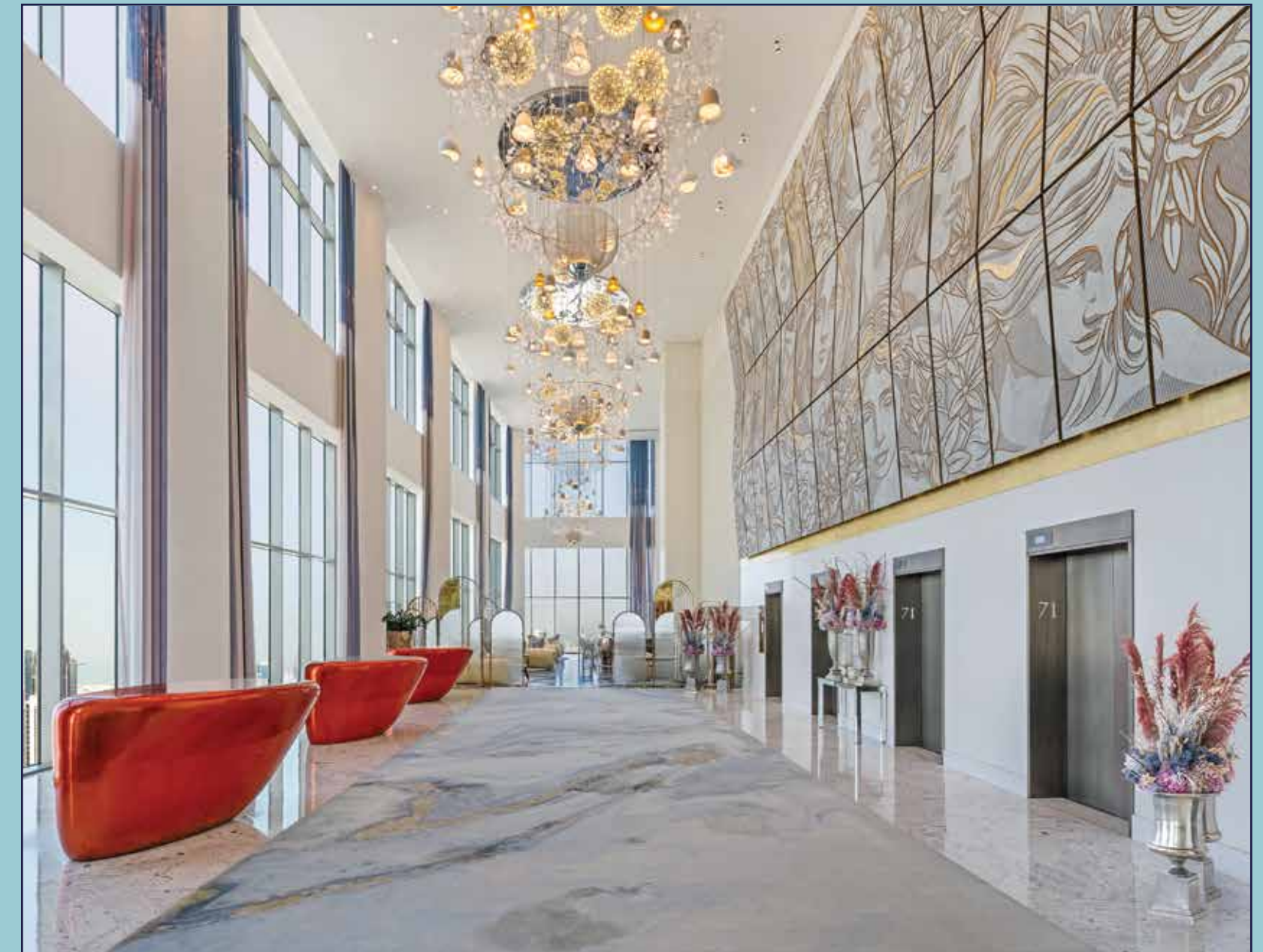
15 Minutes: To Burj Al Arab Jumeirah

HOTEL & RESIDENCES



THE SLS DUBAI ENTRANCE

You'll be met with a large stained, coloured glass window, beautifully exhibiting the famous Latin quote of "Fortune Favours the Bold" a saying that holds true to our daring approach to excellence. This historic artform of coloured glass windows captivates guests, architects and design lovers, alike.



SKY LOBBY

Guests entering through the ground atrium take an express elevator to the opulent Sky Lobby, located on the 71st floor. Floor-to-ceiling windows surround a deluxe lounge and lobby bar, along with panoramic views of the city's bright skyline.

HOTEL ROOMS

Spy on breathtaking scenery from the rooms' spacious terraces and balconies as you set your sights over Dubai Creek, or the twinkling lights of the Burj Khalifa and breathtaking views of the Downtown Dubai, come sunset or sunrise. Decorated in lilac and violet tones, with romantic accents of rose gold motifs, the sublime layouts of the rooms, courtesy of award-winning architects Aedas and interior designer Paul Bishop, are the epitome of luxury living, with a playful twist.

MEET THE HOTEL ROOMS

- 74 Signature King Balcony
- 14 Signature Duo Balcony
- 3 Signature Safe Duo Balcony
- 73 Signature King City View
- 15 Signature Duo City View
- 22 Signature King Burj Khalifa View
- 10 Signature Duo Burj Khalifa View

PREMIUM ROOMS

- 10 Sky Premium King Balcony
- 10 Sky Premium King City View
- 10 Sky King

SUITES

- 10 Sky Family King Suite
- 2 Vanilla Sky King Suite
- 1 Sky Penthouse (One-bedroom)

Total of 254 Hotel Rooms & Suites





HOTEL APARTMENTS

Have access to ultimate exclusivity with SLS Hotel Apartments. Each apartment has a contemporary sophisticated feel, offering the finest in furnishings, materials and finishes. Marvel at breath-taking views of Downtown Dubai, luxuriate in an intimate address with quality services and the promise of additional privacy and discretion.

MEET THE APARTMENTS:

- 68 Urban Living Studio
- 8 Prime Living (One-bedroom Simplex)
- 16 Elite Living (One-bedroom Simplex)
- 84 Cloud Living Duplex (One-bedroom)
- 81 Inspired Living Loft (One-bedroom)
- 10 Grand Burj Living (One-bedroom | Duplex or Loft)
- 24 Wonder Living (Two-bedroom | Duplex or Loft)
- 8 Wonder Burj Living (Two-bedroom)

Total of 299 Hotel Apartments



The background of the entire image is a marbled pattern in shades of teal and light blue, accented with shimmering gold leaf. A large, white-outlined oval is centered on the page, containing a photograph of a woman with dark hair swimming in a pool. The pool's bottom is visible through the clear water, showing a mosaic of blue and white tiles. The woman is wearing a dark, possibly black, swimsuit and is looking towards the camera with a slight smile. The text 'SLS' is overlaid on the right side of the oval, in a large, white, serif font.

SLS

DUBAI

CROWN JEWELS



A sense of cute with its crisp, white interiors, EllaMia is the perfect spot to enter a mid-day daydream with a cup of coffee. Located on the ground floor, EllaMia is all about serving good old-fashioned caffeine, with the aroma of your favourite morning brew, along with a side of house made and freshly baked sweets from macarons, cakes and pudding.

Total capacity: 36 guests



A Michelin Guide selected restaurant, Fi'lia is a daily destination offering local artisanal foods, handcrafted cocktails, and culturally immersive experiences. Fi'lia celebrates a genuine approach to Italian cuisine with a hint of Mediterranean influence. Proud to be a female led restaurant in the region, Fi'lia highlights empowerment and equality. Located at the 70th floor with an abundance of natural light and terrace for the perfect al fresco dining, complimented by breathtaking views of Burj Khalifa. Committed to sourcing the best ingredients, expect handmade pastas, craft pizzas, freshly baked breads and innovative vegetable driven dishes.

Total Seating Capacity: 204 guests



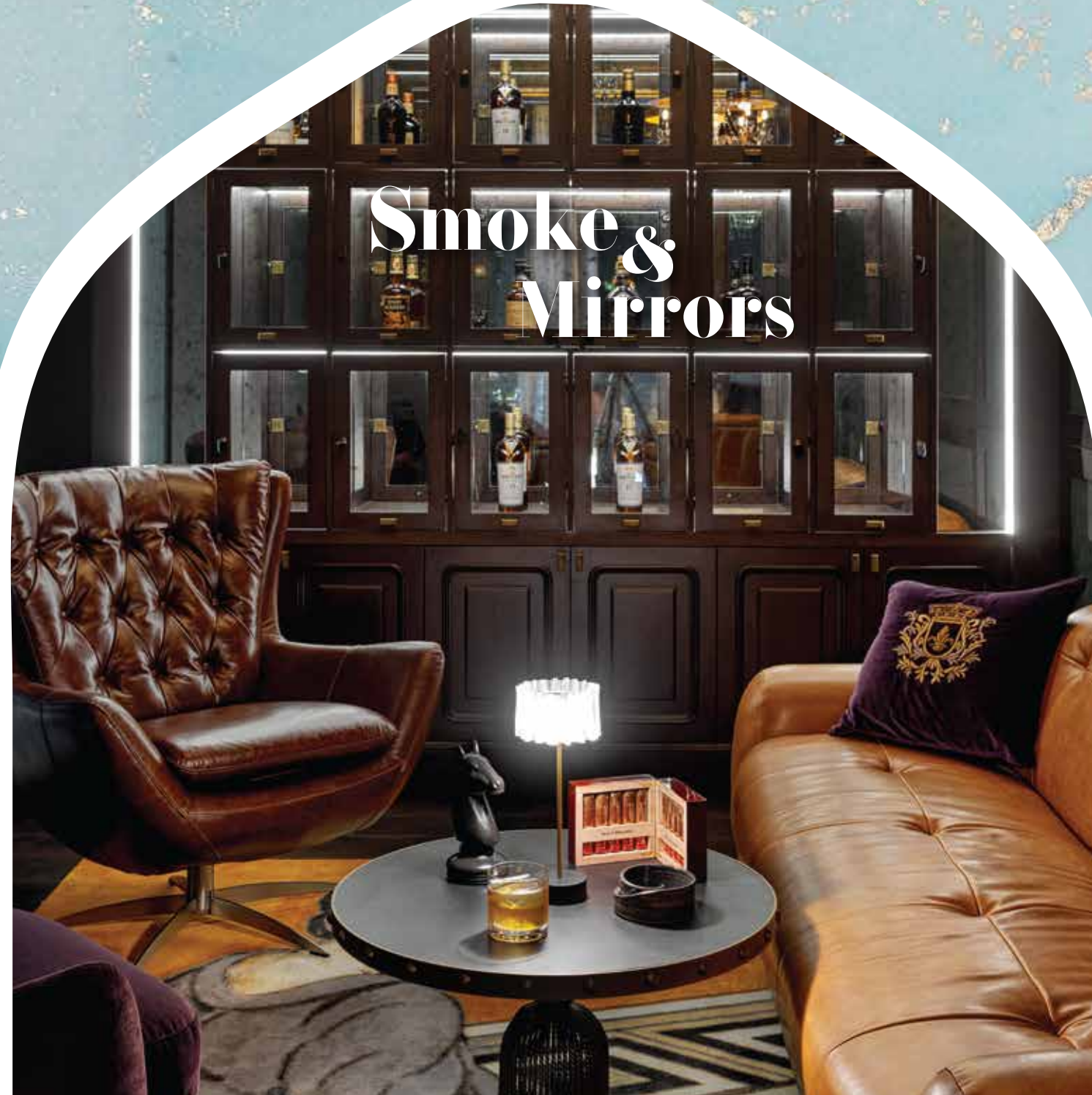
S Bar takes lounge life to new heights. the vibe is casual and the style is bohemian chic with an urban edge. offering an eclectic and evolving musical experience, innovative cocktails, and a tempting array of lite bites, S Bar is the perfect place to meet up with friends any day of the week for an intimate tête-a-tête or an all night party at the outdoor terrace to watch the sun set and the stars light up.

Total capacity: 92 guests



Carna, a contemporary steakhouse concept helmed by the legendary butcher, Dario Cecchini from the Chianti region of Tuscany, Italy. Located at the 74th floor, spend a leisurely evening with friends at the atmospheric indoor space surrounded by panoramic views of Dubai. Carna offers dinner that combines your traditional steakhouse classics with a unique and experience driven culinary take. Carna by Dario Cecchini features an intimate setting rich in velvet interiors, a dedicated bar, private dining area, and striking chandeliers.

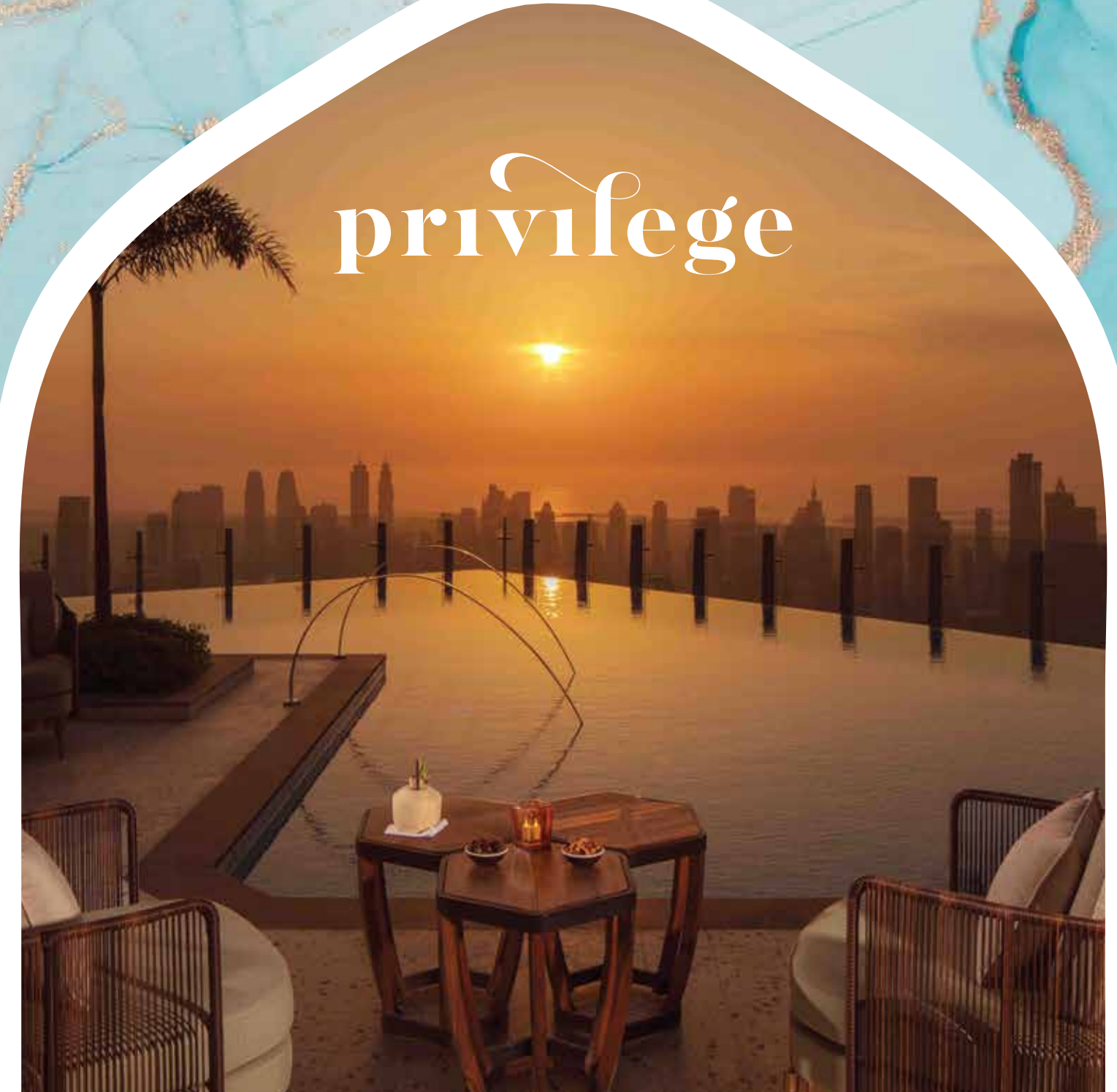
Total seating capacity: 70 guests



Smoke & Mirrors

Disrupting the ordinary, the stylish SLS Dubai is holding onto the best-kept secret in town – a venue where everything is not as it seems. A smooth and sultry lounge, Smoke and Mirrors, is one of the most sought-after destinations in Dubai. Hailing from Mondrian Doha, Smoke and Mirrors is an intriguing blend of mystery, style, divine food, and great music. The best things happen behind closed doors.

Total seating capacity: 55 guests



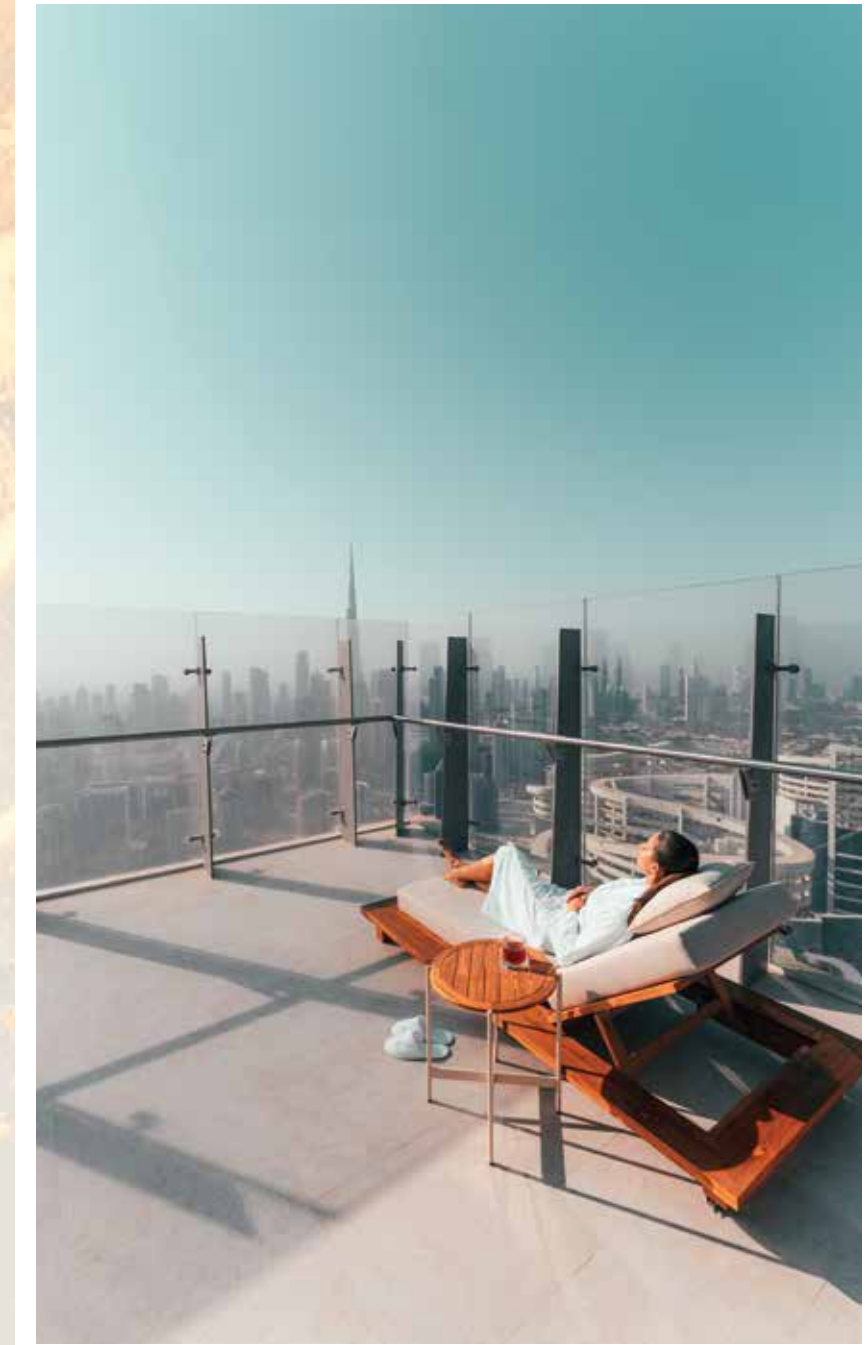
privilege

The most jaw-dropping feature is found on SLS Dubai's rooftop, with its signature rooftop venue, Privilege, where two infinity pools are placed at the top of the 75 stories, with stunning views of the city, guaranteeing to be the most unrivalled sight- seeing spot in town. With signature cocktails, light fare and all the sun to soak, Privilege is the spot to be for sky-high dippers looking to make a splash.

Pool Deck Total Seating Capacity: 201 guests
Night Club Total Seating Capacity: 70 guests

CIEL

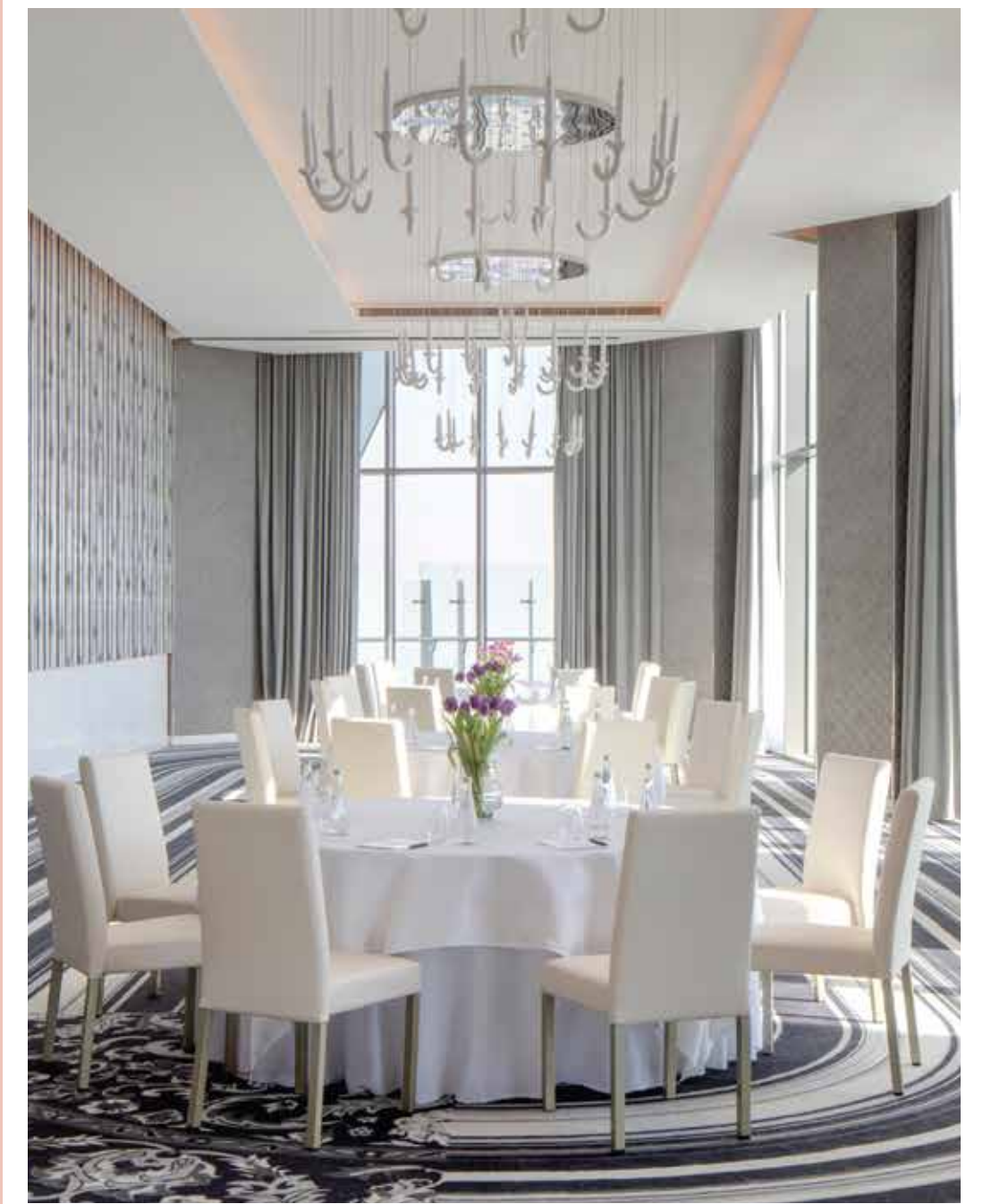
SPA

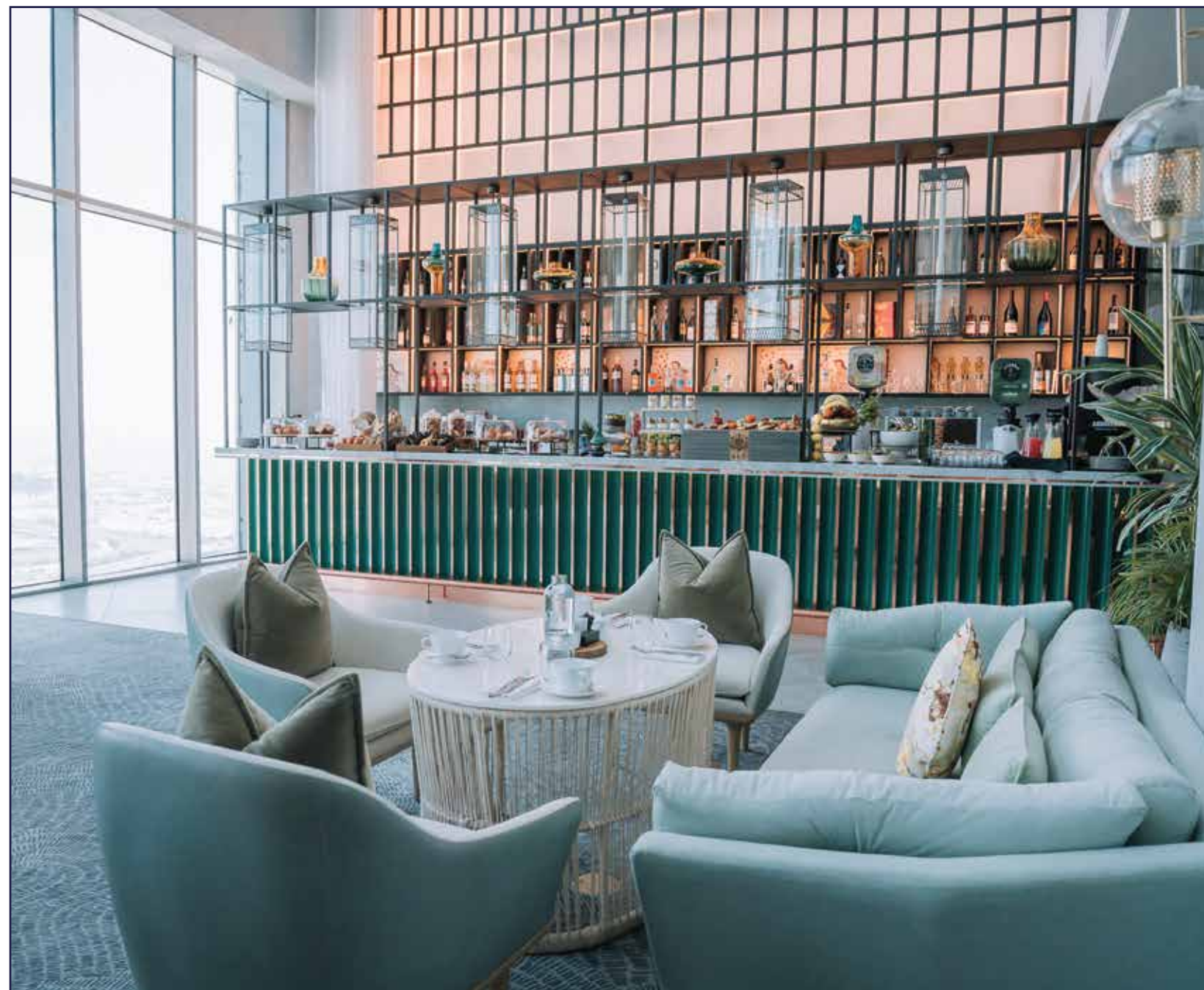


SLS Dubai also includes a signature spa concept, Ciel Spa, the epitome of luxury with 7 treatment rooms, dedicated male and female thermal areas that contain steam rooms, experience showers, plunge pools and relaxation rooms, as well as a full-service grooming salon, a fully equipped gym and outdoor terraces.

MEETINGS & EVENTS

Setting the stage for every and any occasion, from corporate to social events. SLS Dubai's dedicated catering and conference services team, always value attention to detail, ensuring that every type of event is perfectly completed from start to end. There are a total of 6 meeting and ballrooms, with over 260 square meters of space, that can accommodate a range of numbered guests, from 10 to 200.

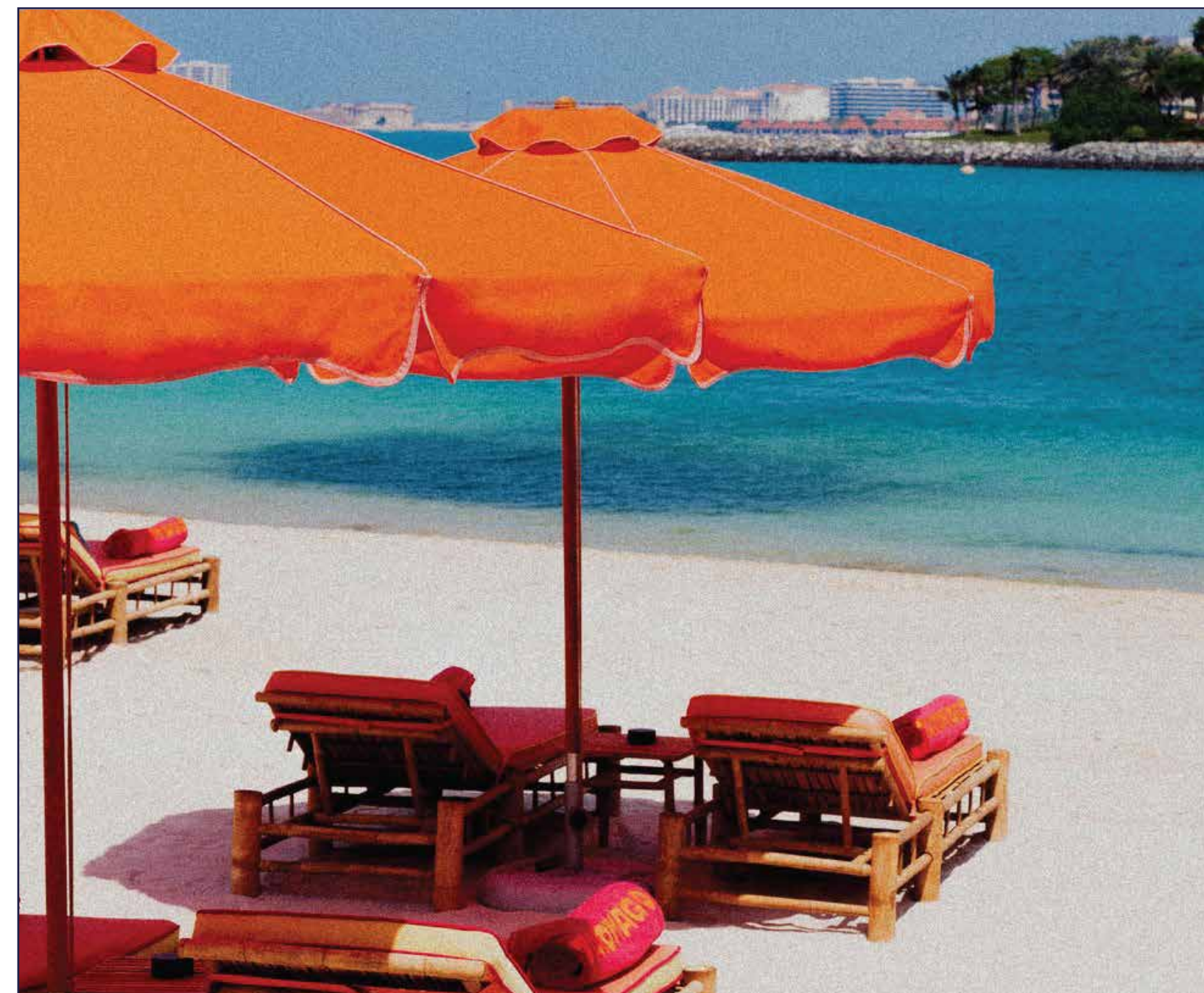




SKY LOUNGE

Nestled on the 70th floor, the newly opened Sky Lounge allows guests to elevate their stay with a designated private space to unwind, work or dine.

Bathed in natural light with plush seating and an inviting space offering unlimited refreshments, a breakfast buffet, happy hour, exclusive discounts on spa, laundry services and complimentary airport transportation, the Sky Lounge promises comfort and serenity to each guest during their stay.



MAKE IT A BEACH DAY

SLS Dubai provides our hotel guests with exclusive access to Tago Mago Beach Club, a stylish Ibiza-inspired destination located on the Palm Jumeirah. This chic and trendy beach club features a private beach and a vibrant menu, perfect for enjoying by the shore.



The rubber duck - imagined. SLS Dubai is home to the SLS duck, bringing the brand's multicolour and playful spirit to life. Wouldn't you want to be chilling poolside with the SLS iconic figure?

The background is a piece of marbled paper with a complex pattern of swirling, organic shapes in various shades of blue, teal, and green, accented with thin, irregular veins of gold or light brown. A thin, white, hand-drawn style oval frame is centered on the page, enclosing the text.

THANK YOU