

NOBU HOTEL

LONDON PORTMAN SQUARE

NOBU CATERING



NOBU CATERING

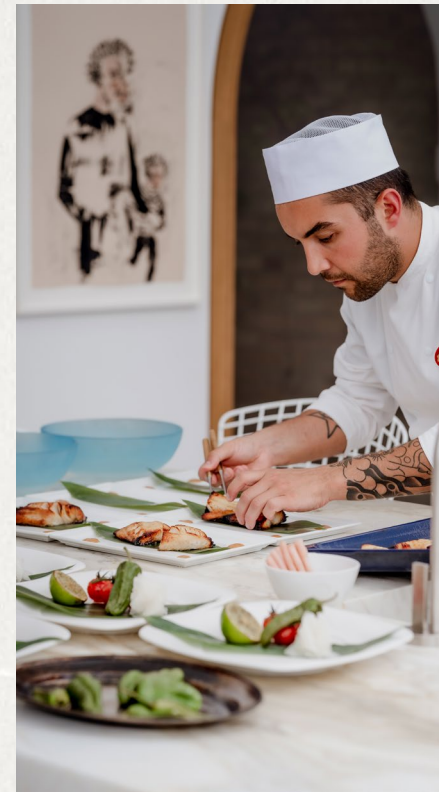
Discover an experience like no other with Nobu Catering and enjoy world famous dining from our kitchens to yours.

Leave your guests feeling spoilt as they indulge in internationally renowned Japanese cuisine with Peruvian influence inspired by Chef Nobu Matsuhisa himself.

Brought to you by Nobu Hotel London Portman Square, we offer the whole experience from start to finish in the following four categories: **Nobu at Home**, **Nobu Social**, **Nobu Corporate** and **Nobu Ultra**.

Alongside a seated private dining experience, we also offer standing canapé & bowl receptions, live cooking stations and masterclasses. All you have to do is click **here** and leave the rest to us





NOBU AT HOME

Nobu at Home is an exclusive experience from the comfort of your home.

Our Chefs travel from our kitchens, to your home to cook up internationally renowned Japanese-Peruvian Cuisine inspired by the famous Chef Nobu Matsuhisa himself. From our iconic Black Cod Miso to an assortment of Nobu Sushi, Sashimi and our famed Tuna Matsuhisa salad.

With Nobu at Home we offer a bespoke occasion, tailor-made to your requirements. Experience an event where we handle everything from food and beverage offering, elegant crockery, cutlery and glassware alongside impeccable service. We ensure that your guests enjoy an experience that incorporates our hosting style; your way

NOBU SOCIAL

Elevate your social gathering with Nobu Social! Whether you're throwing a garden soiree, a wedding celebration, a birthday extravaganza, or a Bar/Bat mitzvah's, entrust Nobu Social to curate an unforgettable experience for you - available for parties of all sizes.

Indulge in the world-class flavours of Nobu which can be transported to any location across the UK. Let us transform your event with our specialised team who will be on hand to plan everything from exciting menus, tableware and showstopping cocktails.

"We had an incredible evening, that we will never forget, thank you again for your organisation and skill in bringing the whole thing together. We know that providing this 'at scale' is no easy feat. The staff who were working were so well organised, professional and efficient. We received numerous comments on how fantastic the service was as well as the food being exceptional." – Zoe Berger





NOBU ULTRA

Introducing Nobu Ultra, an immersive experience where you can enjoy our menu from the comfort of a private jet or yacht. You've experienced it at the hotel, now experience it in the air and ocean. Expect the opulence of our usual menu but without losing the quality as our team are able to organise your dishes to be delivered straight to your jet ahead of takeoff.

Discover beautifully balanced flavours with fusion cuisine - blending traditional Japanese dishes with Peruvian ingredients, from Nobu Matsuhisa himself.

I cannot thank you enough. It was perfection. The style, layout, timing, vibe, music, food and drink. You handled everything incredibly!
– John Clives



NOBU CORPORATE

If you are looking to impress at the office, look no further as Nobu Corporate is available to help create unforgettable moments for you and your team. Whether you're hosting an event at your office or an external venue, we're here to take away the stress and elevate the occasion with an unparalleled dining experience.

Looking to secure a business deal? Nobu Catering can be on hand to create a unique and bespoke experience for the occasion, right within the convenience of your office. Our team will provide a range of menus suitable for your event, all you need to do is tell us your preference, and let us take care of the rest, including delivering it to your doorstep.

NOBU HOTEL
LONDON PORTMAN SQUARE

Please visit ***london-portman.nobuhotels.com/nobucatering*** for any enquiries

Nobu Hotel London Portman Square
22 Portman Square, London W1H 7BG
[Nobuhotels.com/Londonportmansquare](https://nobuhotels.com/Londonportmansquare)