

VOCO[®]

AN IHG HOTEL

Lythe Hill Hotel & Spa

Conference brochure



Expect a hotel full of character, where everything is delivered with an informal, unstuffy attitude.



Welcome

CONFERRING AND BANQUETING

Set in 22 acres of countryside a stone's throw from the town of Haslemere, voco® Lythe Hill Hotel & Spa is the ideal destination for you to escape the workplace.

With our bespoke services and dedicated meeting spaces we promise that your delegates will leave feeling refreshed and full of knowledge from the day. Each of our spaces offer the perfect balance of warmth and privacy ensuring a memorable event designed for you.

The Hazel Suite

GROUND FLOOR

The Hazel Suite located in the heart of our country house hotel, is our main conference and event room with floor to-ceiling windows that act as a gateway to our outdoor terrace, providing an abundance of natural daylight. It is self-contained with a private cloakroom, bar and access onto the terrace, perfect for the summer months.

The exposed beams and high glass ceilings give you the feeling of being immersed in the hotel's country surroundings. Seating up to 200 delegates theatre style, The Hazel Suite is the ideal suite for your larger conference, meetings and events.

The Cedar Suite is just next door so it is the ideal suite to be utilised as your breakout area for those larger conference and meetings.

For dimensions and full capacity details, please see page



The Cedar Suite

GROUND FLOOR

A meeting and banqueting room with a difference, The Cedar Suite is bursting with rustic charm, with exposed brickwork and wooden beams it creates the ideal atmosphere to ensure everyone has a productive day. The large glass doors allow for an abundance of natural daylight for your meeting or corporate event.

The Hazel Suite is just next door so it is the ideal suite to be utilised as your breakout area for those larger conference and meetings.

Being located next door to The Hazel Suite, The Cedar Suite is the perfect breakout area of those larger conference or meetings or can be utilised for your refreshments.

For dimensions and full capacity details, please see page



The Willow Suite

GROUND FLOOR

The Willow Suite is the ideal space for those smaller meetings, with large windows across both walls the room is filled with an abundance of natural daylight to help keep the minds refreshed throughout the day.

This Suite can also be access via The Cedar suite making it the perfect breakout space or the ideal area for your refreshments.

For dimensions and full capacity details, please see [page](#)



The Oak Room

GROUND FLOOR

Nestled in our 14th century Tudor House, the historic grandeur of voco® Lythe Hill Hotel & Spa comes into it's own in our charming Oak Room, with original features including impressive oak wood panelling and feature fireplace.

Full of character and steeped in history The Oak room is the ideal space for your meeting or corporate dining events.

For dimensions and full capacity details, please see [page](#)



At voco® Lythe Hill Hotel & Spa we will make sure you have everything to be the host with the most.



Team Building

CONFERRING AND BANQUETING

Escape the office for the day with your colleagues and discover our 22 acres of land on the hotel grounds. Our dedicated team, at voco® Lythe Hill Hotel & Spa believe that teamwork truly does make the dream work.

We understand that working relationships are important to create an enjoyable work environment. As well as team building experiences, we offer a range of excursions and activities guaranteed to add a little culture and fun into your day. Your dedicated events coordinator will be on hand to personalise your event to suit you.

Rest assured this will be anything but business as usual.

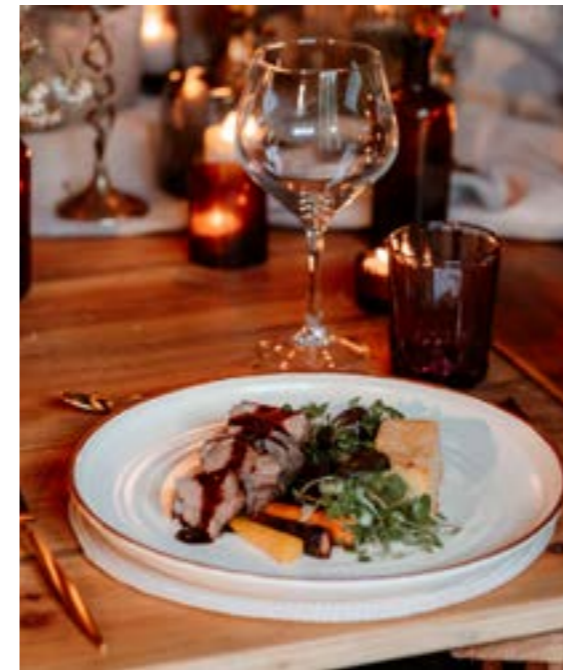
The Spa at Lythe Hill

MORE ME TIME

The business day may be over but there's still plenty for your guests to discover at voco® Lythe Hill Hotel & Spa.

After a productive day what could be more rewarding than a little relaxation in our Spa and Health Club? Wake up your senses with a swim in the pool, workout in the gym or a class in our yoga studio. The sauna and steam room allows you to relax and feel energised followed by the ice water bucket to refresh and rejuvenate your mind and body.

Experience The Spa at Lythe Hill Hotel & Spa like never before with [comfort zone] treatments and discover the true meaning of relaxation and allow your mind and body to unwind.



Eating and drinking

WINED AND DINED

Business lunch, buffet or formal dining, impress your guests with a meal to remember.

Whether you're keeping your delegates sustained and energised or celebrating a corporate success with your team, banqueting at voco® Lythe Hill Hotel & Spa has never been easier.

Enjoy your business lunch in one of our function suites or enjoy outdoor dining on the terrace in the summer months. After business dining is the perfect excuse to relax in The Tudor Restaurant or La Collina Pizzeria.

Our chef's have created a selection of menus inspired by locally-sourced seasonal produce, or we can work with you to tailor-make a menu for any occasion.

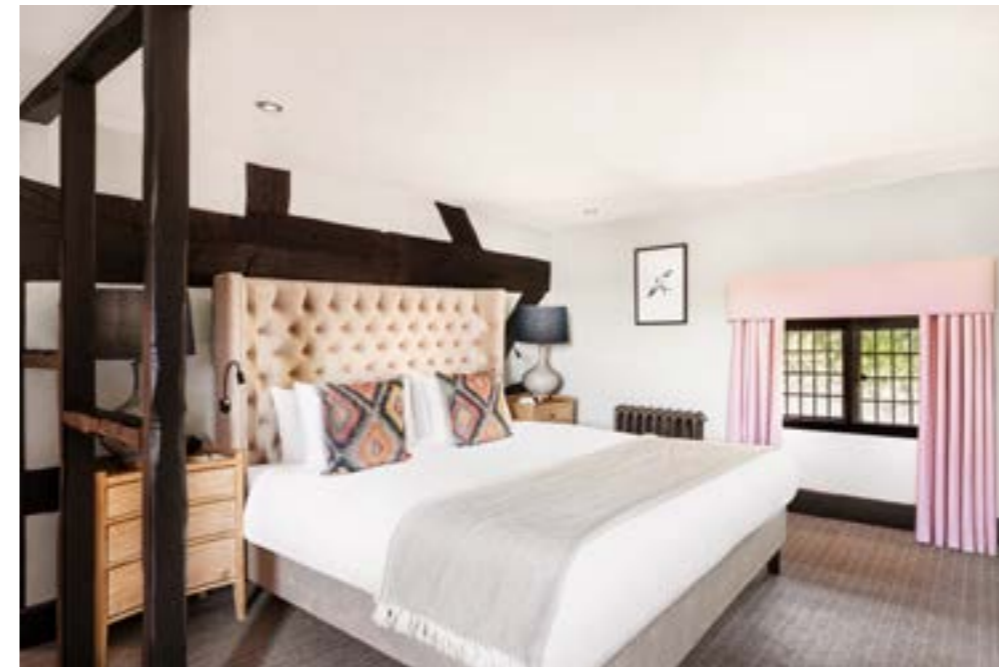
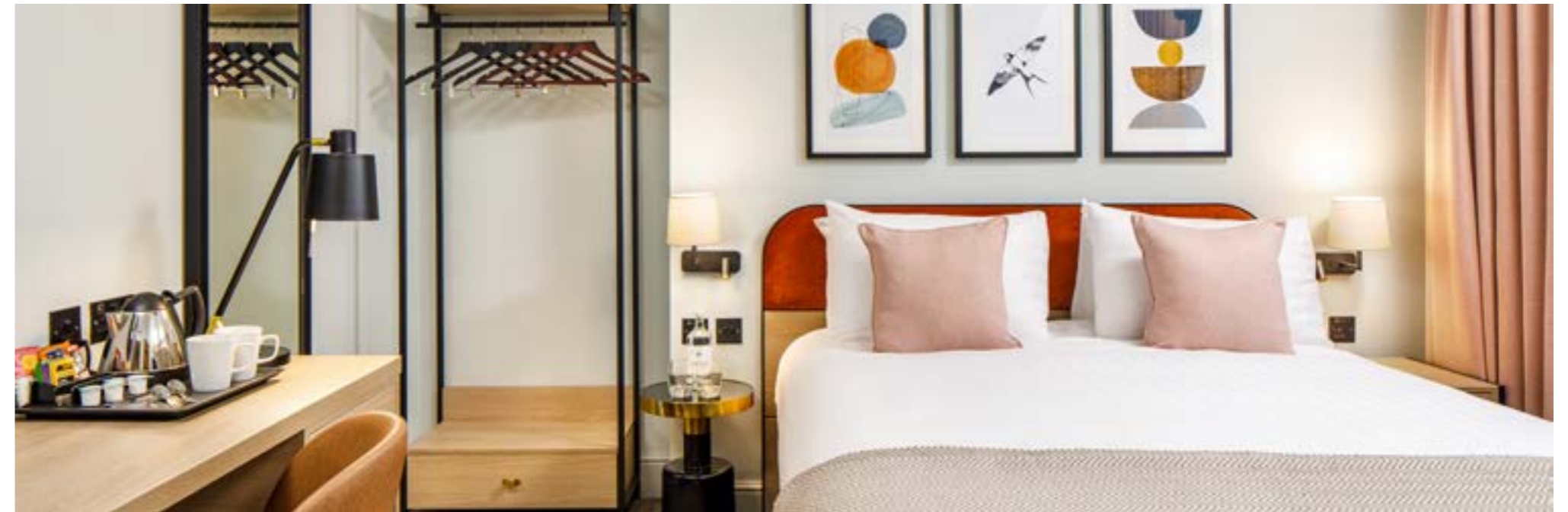
A place to sleep

MORE ME TIME

Escape the city and settle into the picturesque Haslemere countryside for the night. No matter what you require, we have a range of rooms that will match your expectations. With comfort the priority, we feel a bit like home but with those extra indulgences that you expect from a hotel stay. Warm, inviting rooms that put you at ease straightaway.

Enjoy an invigorating shower, a great night's sleep - or a well-deserved afternoon nap in a bundle of luxury bedding specifically chosen to make sure you sleep just as well as you do at home, if not even better.

No matter what room you choose you can simply sit back, relax and enjoy your stay.



24 hour delegate rate

FROM £199 PER PERSON

- Minimum of 8 delegates
- Overnight accommodation in a Standard Queen
- Breakfast
- Two course dinner
- Use of the leisure facilities
- Dedicated meetings coordinator
- Private function suite hire
- Use of requested AV equipment
- Stationery
- Free Wi-Fi
- Complimentary onsite parking
- Unlimited tea, coffee and cordials
- Mid morning refreshments
- Conference lunch
- Afternoon refreshments

Day delegate rate

FROM £59 PER PERSON

- Minimum of 8 delegates
- Dedicated meetings coordinator
- Private function suite hire
- Use of requested AV equipment
- Stationery
- Free Wi-Fi
- Complimentary onsite parking
- Unlimited tea, coffee and cordials
- Mid morning refreshments
- Conference lunch
- Afternoon refreshments



Conference lunch menu

MORNING AND AFTERNOON BREAKS

Includes filtered coffee and tea

MAINS

Please choose any 3 items per day

Chargrilled vegetable and goats curd bruschetta

Mini power salads

Quinoa, pomegranate, feta cheese, coriander, leaf, spinach

or

Buck wheat, black sesame seeds, roasted hazel nuts, radish, sultanas, shaved parmesan, rocket and apricots

Mini basil pesto and sun blush tomato pasta

Tortilla wraps:

Coronation chicken

Tuna mayo and salad leaves

Hummus, cucumber and watercress

Jerk chicken fillet with peas and rice

Mini caesar salad

Tandorri chicken

SIDES

Asian slaw

Vegetable crisps

Maple - mustard glazed chipolatas

SWEET TREATS

Lemon posset with lemon gel, candied peel and a lemon shortbread

Trio of sorbet with fresh berries

Food allergies and intolerances: we welcome enquiries from guests who wish to know whether dishes contain particular ingredients.

Please note: before placing your order, please inform a member of the team if anyone in your party has a food allergy.

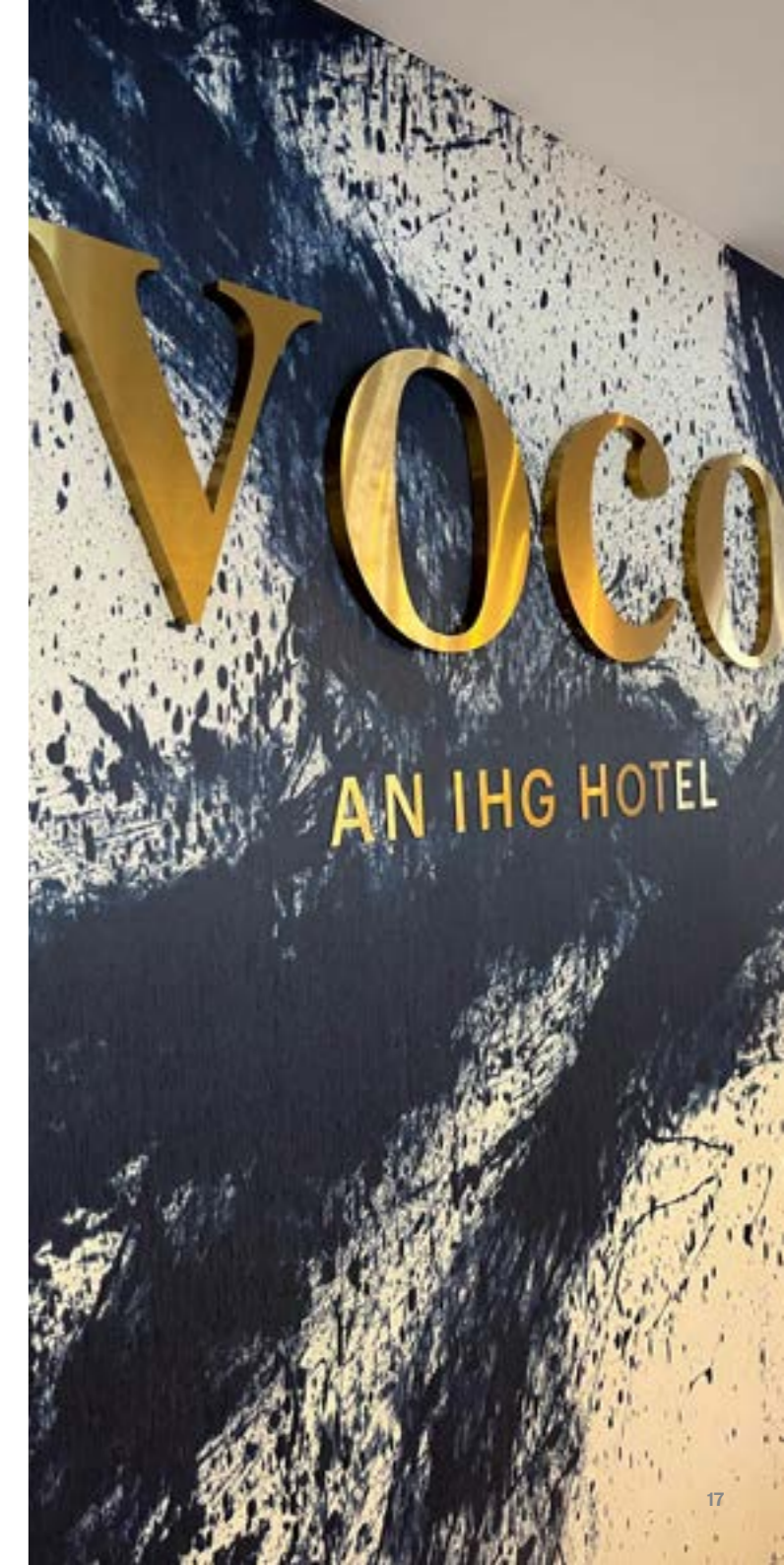
Adults need around 2000 kcal a day.



Points to share

HOTEL BENEFITS

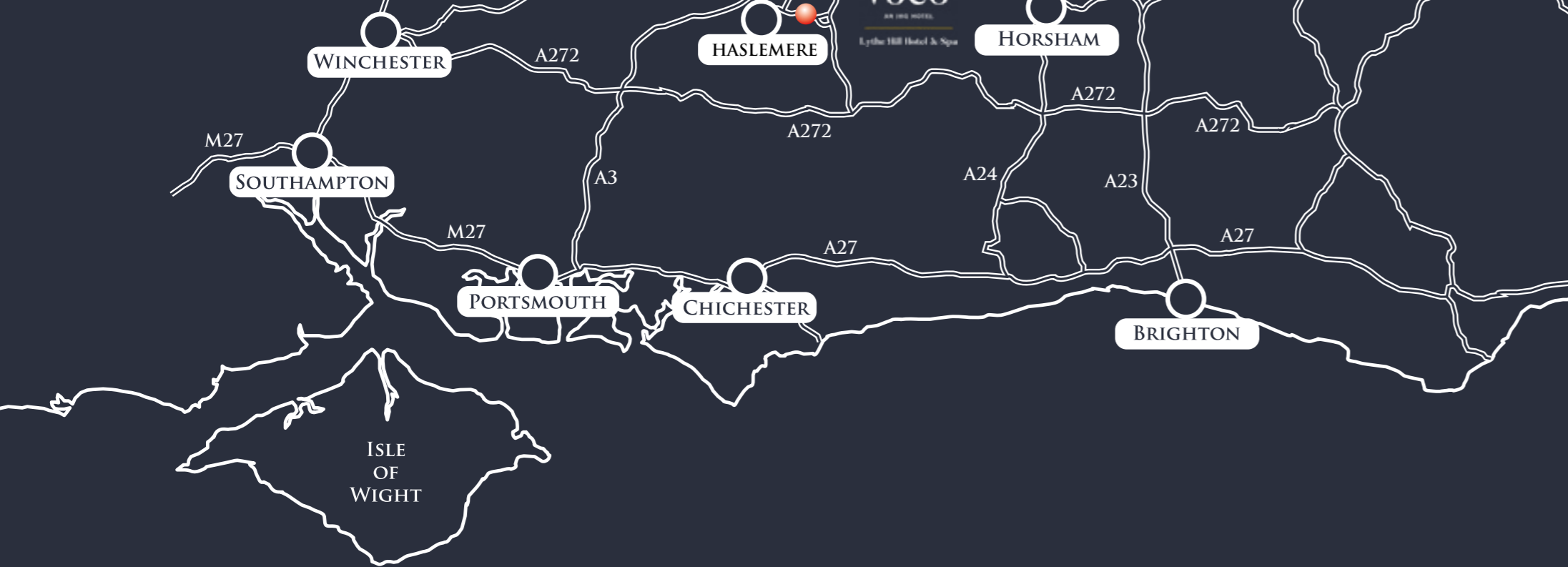
- Rural location in the South Downs National Park, ideal for team building with 22 acres of land and indoor and outdoor space
- 60 thoughtfully appointed and comfortable furnished rooms and suites
- Fantastic countryside location on the footsteps of the Southdowns
- Incredible dining options
- Venue that is bustling with life from breakfast to dinner and transform into intimate spaces into the night
- Relaxing spa and wellness facilities, to include an indoor heated swimming pool, gym and yoga studio
- Modern spacious meeting rooms and bespoke event spaces, plus a variety of private areas eligible for alternative use
- Personalised services and food and beverage presented from early morning, noon and night
- Perfectly located near London Heathrow and London Gatwick Airports, and only 40 minutes from London Waterloo
- Convenient access via public transport
- Haslemere Train Station located 1.9 miles away
- Short distance from A3 and M25
- Complimentary high speed Wi-Fi access
- On-site car parking
- Natural day light in all function suites
- IHG Business Rewards - with IHG Business Rewards, you can earn points when you book accommodation, meetings and events
- Wine Cellar perfect for team building events. Working in conjunction with Blackdown Ridge Winery located on the outskirts of the hotel



Capacities and dimensions

Room Name	Dimensions L x W x H (m)	Floor Space (m2)	Theatre	Classroom	Boardroom	U-shape	Cabaret	Banquet
The Hazel Suite	22.8 x 7.6 x 2.7/3	173	200	60	50	N/A	100	200
The Cedar Suite	15 x 7.6 x 2.7/3	114	80	30	30	30	30	50
The Willow Suite	7.6x7.6x2.7	58	40	18	20	N/A	18	20





LONDON

VOCO®

AN IHG HOTEL

Lythe Hill Hotel & Spa

Finding us

TRAVEL BY RAIL

Haslemere Station – 1.5 miles | Witley Station – 6.0 miles

TRAVEL BY ROAD

10.6 miles to/from A3
 12.7 miles to/from A272 | London – 47 miles
 Portsmouth – 32 miles | Guildford – 16 miles

FREE ON-SITE PARKING

TRAVEL BY AIR

Heathrow Airport – 41 miles | Gatwick Airport – 34 miles

Petworth Road, Haslemere, Surrey GU27 3BQ
 +44 (0) 1428 744815 | SB@lythehill.com

VOCO®
AN IHG HOTEL

Lythe Hill Hotel & Spa