

**SOMERSET
HOUSE** step inside think outside

S K A T E

CELEBRATE THIS WINTER AT SOMERSET HOUSE

One of London's most spectacular festive settings

events@somersethouse.org.uk

+44 (0)20 7845 4618

somersethouse.org.uk/venue-hire

As the home of cultural innovators, Somerset House connects creativity and the arts with wider society. It brings worlds together to intensify creativity and multiply opportunity, driving artistic and social innovation at once.

The platform for our work is an historic building at the heart of London with a long history of public service and counter perspective. It has always been open to the world, and this spirit of constant curiosity remains at its heart. Today, as host to the UK's largest creative community working globally across art, technology, business and social enterprise, it continually draws fresh ideas and new talent in. Somerset House invites everyone to 'Step Inside, Think Outside', regardless of age, stage or background.

Run as a charity by the Somerset House Trust, all event hire income directly contributes to our diverse cultural programme, our pioneering engagement & skills work, our support of emerging artists and helps to maintain our historic Grade I listed site. You can be confident that your event will directly support an organisation offering immense value to an audience which goes far beyond your attendees.

Download our Venue Hire Brochure [here](#).





'Our Christmas Party at Somerset House was a great success, the venue looked beautifully festive and the food and drink was delicious. The feedback from staff has been very positive, thank you for being so great to work with! '

- London & Capital

'The whole process was seamless and we loved planning this event. The feedback from everyone was this was our best party yet! We had the best time, the acts we had were incredible and I am so grateful it was all so easy on the night!'

- Hush

'a massive thank you again to you and the wonderful team for last night's event! It was truly a success – I have never seen our office crowd look so jolly. The food was fantastic and the planning process was made stress free with your help.'

- PageGroup

'Thank you SO much for all your help with our event - it was a real success and the staff have given me some incredible feedback on the venue/food & drink/ambience... commenting that this was our best Christmas Party to date... the whole evening was seamless, I can't thank you enough!'

- Boston Consulting Group

'It was an amazing evening thank you and all our guests were super happy and had a great time!! We hope to return next year!'

- Snowflake

'The venue was great... The DJ was brilliant and played some great music so all in all everything was perfect. Thank you so much...I will be in touch next year to re-book...'

- Newton Investment Management



YOUR WINTER CELEBRATION

OPTION 1: CANAPE & BOWL FOOD RECEPTION

The [Lancaster Room](#) and [River Rooms](#) are a versatile suite of rooms located in the New Wing, unlike any other venue at Somerset House. The aesthetically raw grandeur of the rooms, with dramatic pillars, original fireplaces and high ceilings, set against the stunning views over the Thames, takes the original features of Somerset House and adds a contemporary cutting edge.

With its own private entrance featuring a grand staircase, and a small outdoor area, this venue has huge potential - the ideal setting for your winter party. Our dedicated team will be on hand to ensure your guests enjoy a celebration like no other.

Your package (based on a minimum of 150 guests) includes:

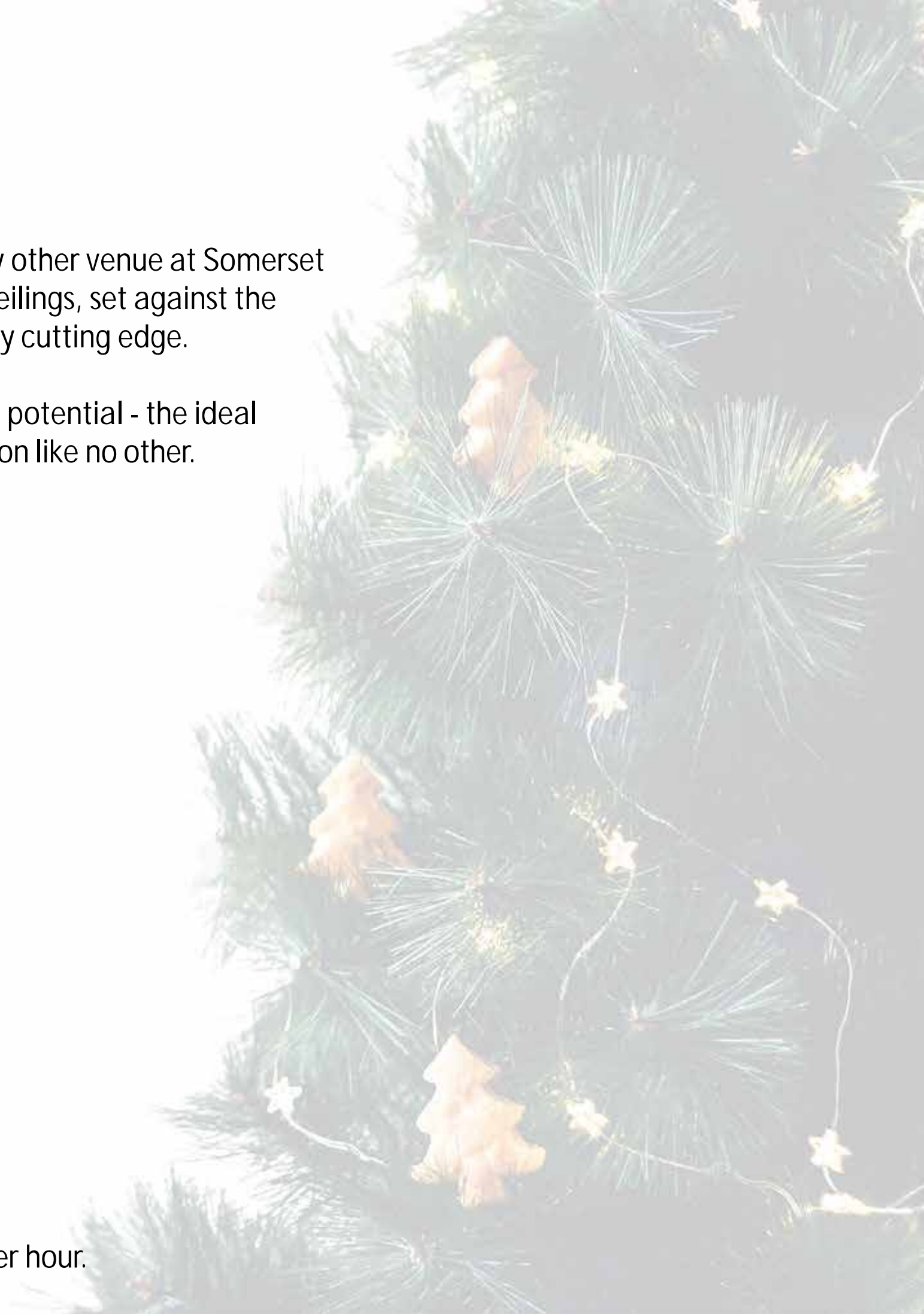
- Exclusive hire of the Lancaster and River Rooms from 17:30 until 23.00
- Guest arrival from 18.30
- Glass of Prosecco on arrival
- Selection of nibbles
- Canapés (3 per person) and Bowl Food (3 per person)
- Complimentary food tasting of your chosen menu for up to two people
- Unlimited house red and white wine, house beer, soft drinks and mineral water (bar opens at 19.00 and closes 30 minutes prior to guest departure)
- Furniture, bar and festive decoration
- DJ, PA system and coloured uplighters
- A host to meet and greet guests, on request
- Full event management, dedicated event security and cloakroom facilities provided

150 – 249 Guests : £145 + VAT per person

250 – 350 Guests: £140 + VAT per person

Maximum capacity 350 Guests

Should you wish to extend your event past 23.00, this is an additional cost of £27.50 + VAT per person, per hour.



YOUR WINTER CELEBRATION

OPTION 2: CHEF'S TABLE RECEPTION

The [Lancaster Room](#) and [River Rooms](#) are a versatile suite of rooms located in the New Wing, unlike any other venue at Somerset House. The aesthetically raw grandeur of the rooms, with dramatic pillars, original fireplaces and high ceilings, set against the stunning views over the Thames, takes the original features of Somerset House and adds a contemporary cutting edge.

With its own private entrance featuring a grand staircase, and a small outdoor area, this venue has huge potential - the ideal setting for your winter party. Our dedicated team will be on hand to ensure your guests enjoy a celebration like no other.

Your package (based on a minimum of 150 guests) includes:

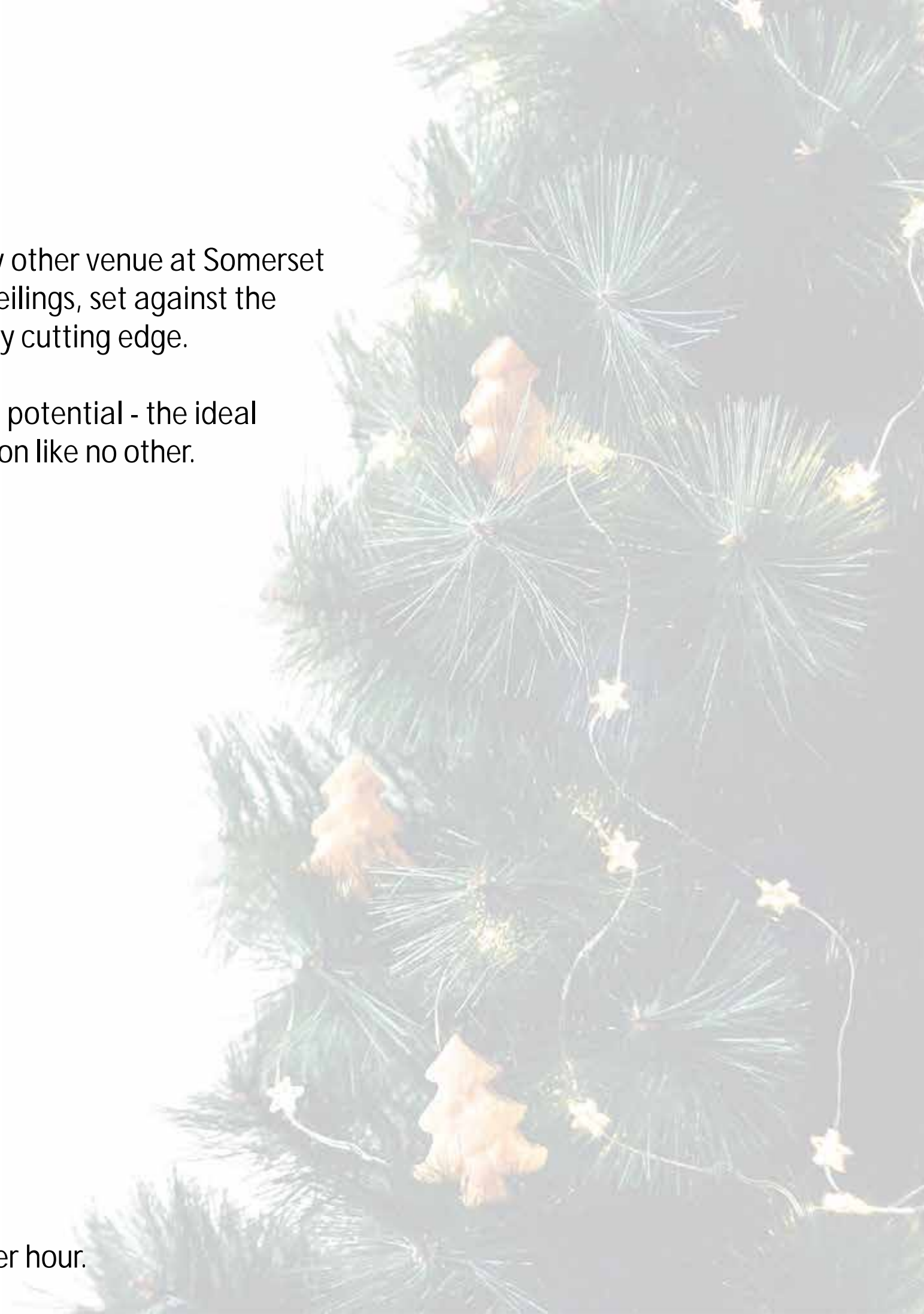
- Exclusive hire of the Lancaster and River Rooms from 17:30 until 23.00
- Guest arrival from 18.30
- Glass of Prosecco on arrival
- Selection of nibbles
- Bowl Food (3 per person) plus Chef's Table Stations (based on 3 items per person)
- Complimentary food tasting of your chosen menu for up to two people
- Unlimited house red and white wine, house beer, soft drinks and mineral water (bar opens at 19.00 and closes 30 minutes prior to guest departure)
- Furniture, bar and festive decoration
- DJ, PA system and coloured uplighters
- A host to meet and greet guests, on request
- Full event management, dedicated event security and cloakroom facilities provided

150 – 249 Guests : £150 + VAT per person

250 – 350 Guests: £145 + VAT per person

Maximum capacity 350 Guests

Should you wish to extend your event past 23.00, this is an additional cost of £27.50 + VAT per person, per hour.



RESTAURANT ASSOCIATES

EVENTS



CANAPE AND BOWL FOOD MENU

SELECTION OF CANAPES

- Honey mustard and port glazed chicken skewer (GF) (DF)
- Cider braised pork belly, black pudding, cinnamon and apple chutney (GF)
- Monkfish fritters, caper and parsley sauce (DF)
- Beetroot cured salmon, horseradish cream, blini and sturgeon caviar
- BBQ jackfruit bonbon tomato chutney, crispy basil (Vg)
- Caramelised onion, sweet pepper and parsnip tart, herb crust, sage cream (V, GF option available)

SELECTION OF BOWL FOOD

- Cinnamon and apricot braised pork slider, applewood cheddar
- Sage and onion stuffed turkey roulade, rosemary Parmentier, winter greens (GF)
- Tandoori salmon, pea pilau, cucumber raita (GF)
- Pan fried halibut, saffron potato, braised cabbage, caper butter sauce (GF)
- Sweet potato and chickpea tagine, fruity cous-cous, pomegranate and minted yoghurt (V, GF)
- Butternut squash and sage gnocchi, walnut, truffle crumb (Vg)

CHEF'S TABLE MENU

SELECTION OF BOWL FOOD

- Cinnamon and apricot braised pork slider, applewood cheddar
- Sage and onion stuffed turkey roulade, rosemary Parmentier, winter greens (GF)
- Tandoori salmon, pea pilau, cucumber raita (GF)
- Pan fried halibut, saffron potato, braised cabbage, caper butter sauce (GF)
- Sweet potato and chickpea tagine, fruity cous-cous, pomegranate and minted yoghurt (V, GF)
- Butternut squash and sage gnocchi, walnut, truffle crumb (Vg)

CHEF'S TABLE (includes all of the below)

- Maple glazed turkey, cranberry ragu (GF)
- Pigs in blankets (DF)
- Mustard and honey roasted gammon, caramelised pineapple (GF)
- Spinach, feta and pine nut parcel (V)
- Poached Scottish salmon, dill and caper dressing (GF)
- Salad of Brussels stalks, basil, pine nuts, redcurrants (GF, Vg)
- Pear, walnut and honey pie with homemade pastry (V)

V = Vegetarian, Vg = Vegan, DF = Dairy Free, GF = Gluten Free

Please note all rates quoted are excluding VAT at the prevailing rate. Please let our team know of any special dietary requirements and we'll do our best to accommodate.

RESTAURANT ASSOCIATES

EVENTS

ENHANCE YOUR EVENT WITH A SELECTION OF CATERING ADD-ONS

ADD CHEF'S TABLE TO CANAPE & BOWL FOOD RECEPTION

£14.75 per person

ADDITIONAL CANAPE £3.50 per item

ADDITIONAL BOWL FOOD £6 per item

CHEESE AND CHARCUTERIE £11.30 per person

Selection of fine cheese and meat served on platters

Accompanied by a variety of crackers and preserves

LATE NIGHT SNACKS £6.45 per person

Selection of Sliders:

Fish butty, tartare sauce

House blend burger, mustard mayo

Portobello mushroom burger, garlic aioli (Vg)

DESSERT COUNTER £13.20 per person

Lemon meringue pie

Christmas chocolate Yule log

Winter wonderland mini tree cupcake

Christmas pudding strudel and almond crème (Vg)

DESSERT CANAPES £3.50 per item

Christmas pudding cone

Stollen bite with brandy cream

Lemon meringue pie

Vegan chocolate cake, cinnamon cream (Vg)

Seasonal mince pie

PANETTONE STATION £6.55 per person

Served with dark chocolate, crème anglaise, Baileys original Irish cream sauce.

Accompany with dessert wine for +£2.10 per person

FESTIVE DRINKS

Upgrade to Champagne on arrival, £6.25 per person

Enjoy Prosecco all night, £15.40 per person

Enjoy Champagne all night, £32 per person

Mulled Wine, Mulled Cider or Winter Pimm's, £8.50 per item

Winter Negroni or Tiramisu Martini, £9.10 per item

Upgrade from House Wine, POA

BAILEY'S HOT CHOCOLATE BAR £8.50 per item

Original Irish cream, salted caramel, Chocolate Luxe and Almande

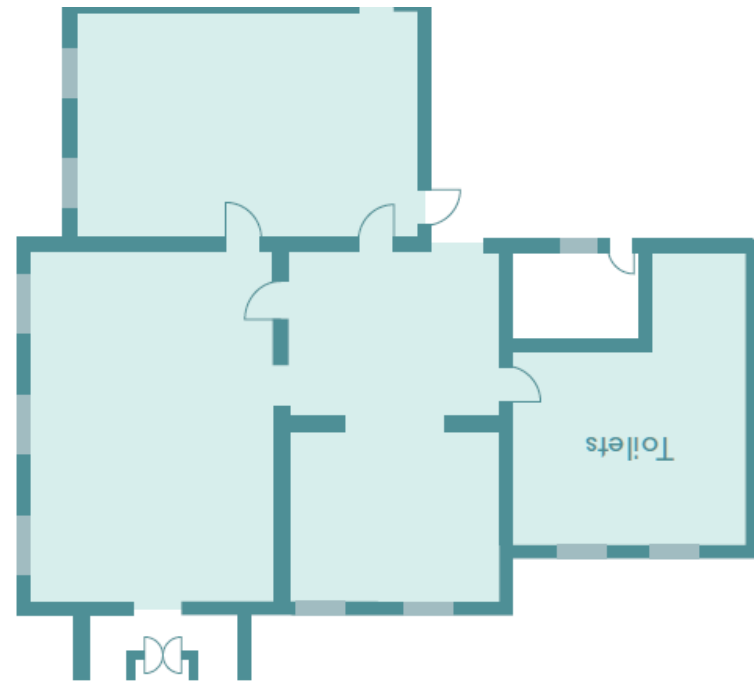
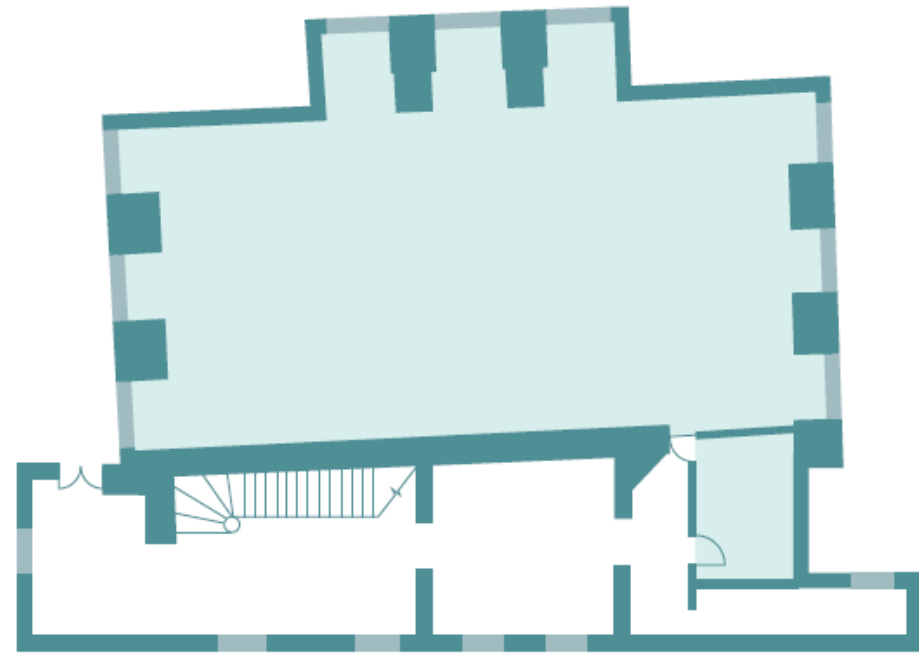
Topped with whipped cream, mini marshmallows and sprinkles

SPIRITS PACKAGE from £9.50 per person per hour

COCKTAIL BAR from £24.95 per person

Includes additional bar with staff, 2 x bespoke cocktail options and a non-alcoholic option. Based on 2 x drinks per person. Add flair or dry ice for that wow factor!

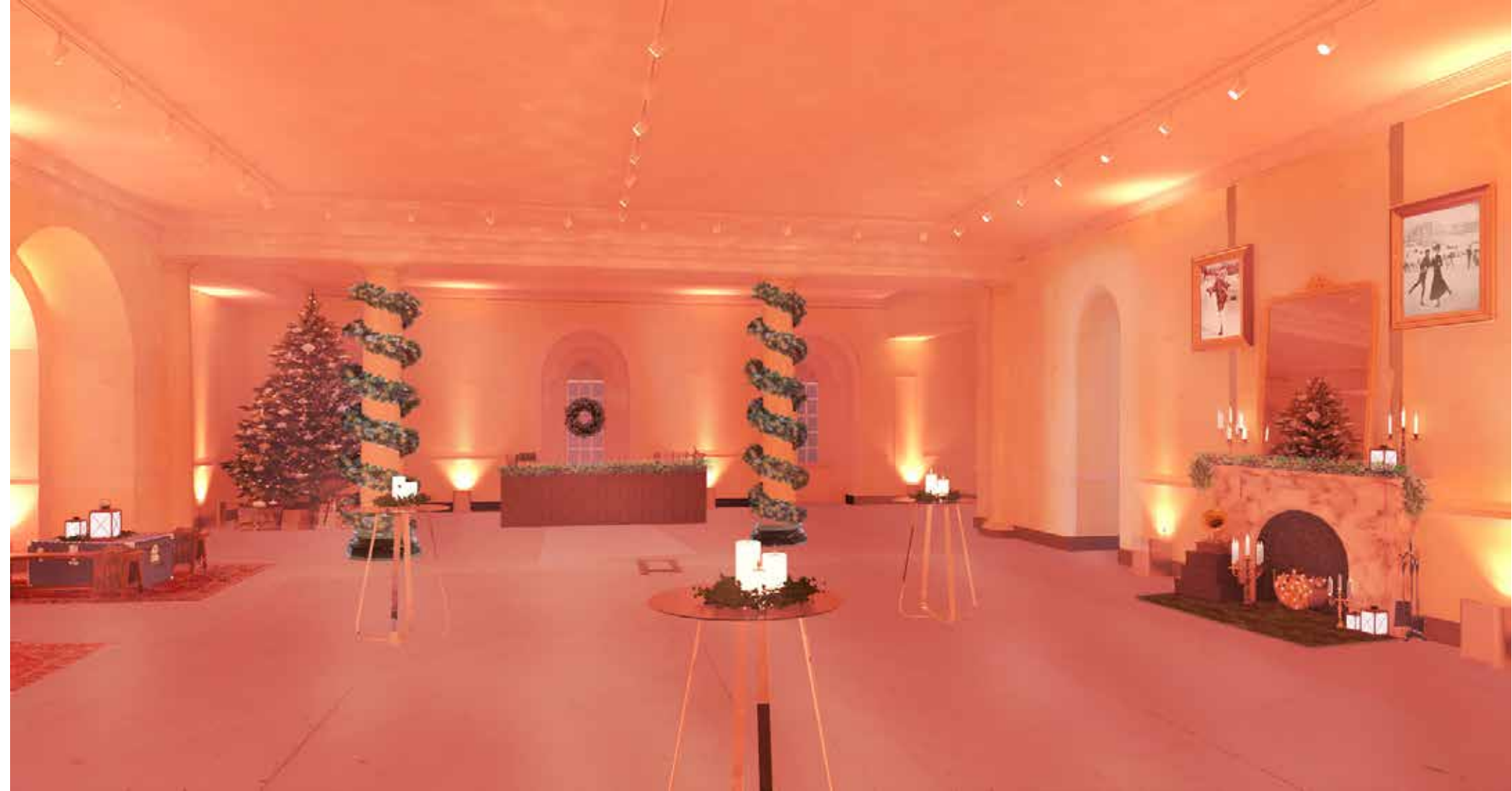
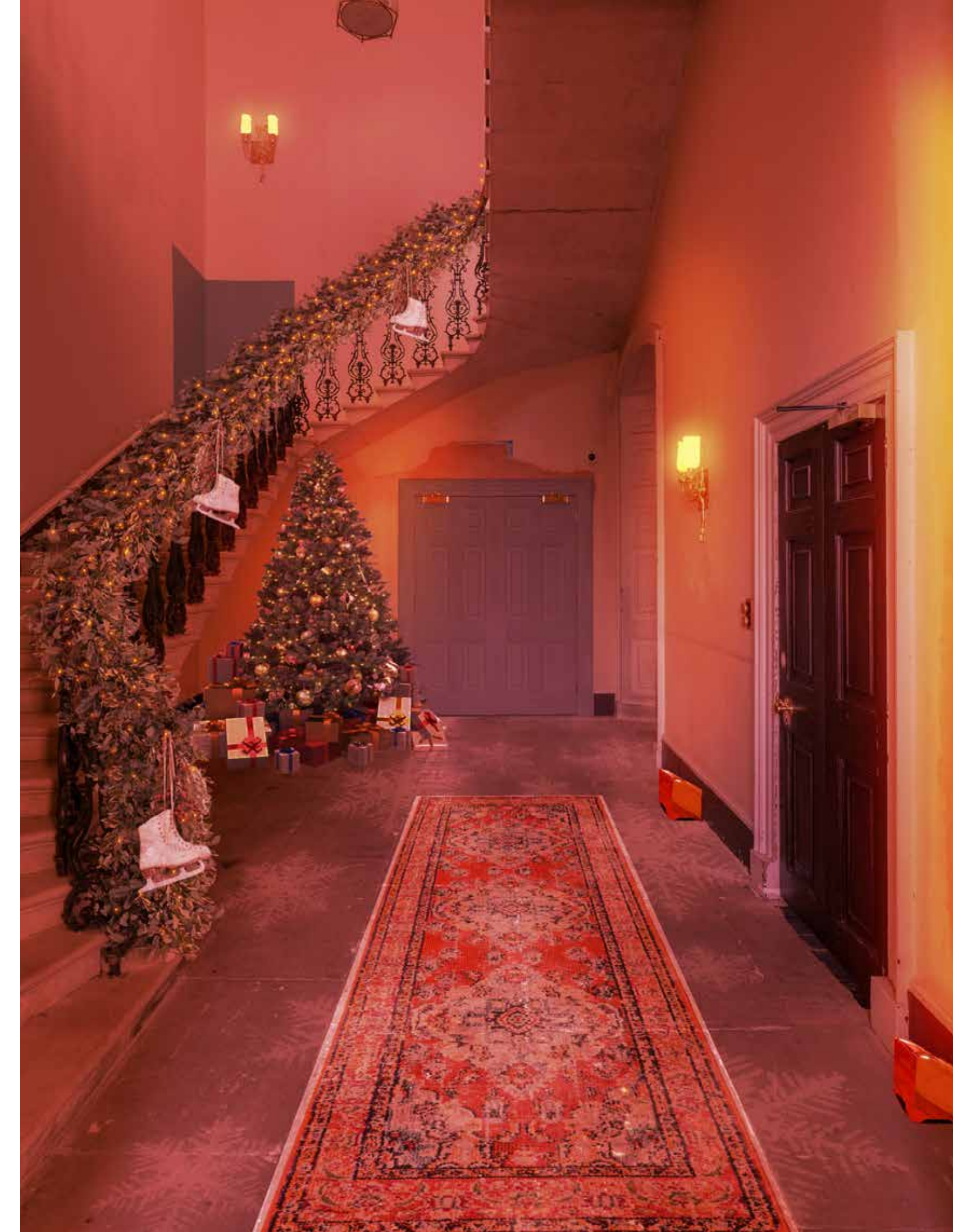
THE LANCASTER ROOMS & RIVER ROOMS



Lancaster Room..... 17.4m x 8.7m

River Rooms 162m²







EUPHONICA



ADDITIONAL ENTERTAINMENT AT SOMERSET HOUSE

We are a team of curators who over 15 years have created bespoke experiences for individuals, brands and venues. Having worked with Somerset House for the past 10 years and partnered on the Christmas package in 2022, 2021 and 2019. We know the space. We know what works.

LIVE MUSIC

Add an additional musician/s to your DJ:
vocalist, saxophonist, violinist,
percussionist or a combination
From **£550 + VAT** (per musician)

Live duos/bands to play Duo
from: **£850 + VAT** Trio from:
£1,250 + VAT
Quartet from: **£1,650 + VAT**

PHOTO BOOTHS

Boutique photo booth with duplicate photo strips, props and backdrop and an online picture gallery.

£1,200 + VAT
Optional extras are available on request

OTHER ENTERTAINMENT

- ✓ Magicians
- ✓ Caricaturists
- ✓ Tarot Readers
- ✓ Stilt Walkers
- ✓ Dancers
- ✓ Freestanding Aerialists
- ✓ and many more!

*All costs for live acts are based on 2 x 45 mins sets or similar.
For many of these additions we would need the set up time extended from 6pm to 5pm - this would need to be discussed with your Somerset House contact.*

Once your event is confirmed, please contact Grace Barnett using the details below to discuss any potential additional entertainment.

grace.b@euphonica.com || +44 (0)20 3397 9018 || www.euphonica.com



Interactive Document

SKATE

15 NOV 2023 – 14 JAN 2024

Hailed as one of the capital's favourite winter experiences, Skate at Somerset House heralds the start of the festive period.

OPTION 1 – ADD TICKETS - £22 +VAT PER PERSON

- Booking large group sessions for up to 80 guests skating at the same time
- £22 + VAT (per person, per session)
- Sessions start on the hour and run for 45 minutes
- Skate boot hire included

OPTION 2 – EXCLUSIVE SESSION - £7,500 +VAT

- Private session for up to 250 guests skating at one time (minimum of 120 guests required)
- Skate boot hire included
- *Multiple/back to back exclusive sessions are subject to approval*
- *A few limited sessions for pre-opening are available*
- *Availability is limited after general on-sale*

Please note that all options are only available in association with a venue hire and are subject to availability.

Group bookings (for up to 40 guests), without a venue hire included, need to be made via the main ticketing line.



ENHANCE THE EXPERIENCE

From season to season, our cultural programme is ever changing, offering opportunities to provide guests with an unforgettable experience at Somerset House. Speak to the team and discover how you can make the most of our unique offering by incorporating the programme into your event.

EXCLUSIVE EXHIBITION ACCESS

Combine your event with a private view of Somerset House's curated exhibitions. Starting from £1,500+VAT.

Options to include a curated tour or talk on the themes of the exhibition are also available at an additional cost.

GUEST TICKETS

Surprise your guests with tickets to an exhibition or live event alongside your event.

See [What's On](#).

THE COURTAULD

Home to one of the greatest art collections in the UK and located in the historical setting of Somerset House, options to combine your event with a private view of **The Courtauld** are also available. Find out more [here](#).

BEHIND THE SCENES TOURS

In this 1 hour experience, you'll take a walk through the varied and surprising history of the site, take a peek behind closed doors, step into our fascinating Deadhouse, explore an unrivalled architectural gem and learn more about the very special story of this building and amazing individuals who have lived and worked here across the centuries.

Tours are available for up to 20 people and two tours can run simultaneously. Starting from £300+VAT per tour.

PAY IT FORWARD

Should you choose to enhance your event, you will be supporting one of our focus groups by automatically opting in to donate tickets to them.

Somerset House's Engagement & Skills activity exists to deepen and widen engagement, to remove barriers and increase representation across the arts and creative sectors and within our workforce and audiences. It focuses on targeted groups for 2+ years to establish meaningful relationships. We look at those groups which identify as underrepresented in the sector's audiences and workforce, and work with partners to reach those we wish to engage.

Our focus groups for 2022 - 2024 include those who identify as underrepresented in the sector's audiences and workforce; 16-30-year-olds; single parent families; young refugees; young carers; LGBTQIA+ and gender non-conforming young people of colour.

HIRE DETAILS

ACCREDITED SUPPLIERS

Please note that as Somerset House is a Grade I listed building, we do not allow any non-accredited suppliers to work onsite. If you would like to add any extras to your party package (including photobooths and additional entertainment), you can find our list of accredited suppliers [here](#).

Restaurant Associate Events are our on-site caterers, you can find out more about them [here](#).

REFUNDABLE SECURITY DEPOSIT

A refundable security deposit is required for all bookings. The amount of deposit owed is calculated on the length of hire period and will be invoiced separately from the Hire Fee. This deposit is fully refundable up to 30 days after the event, subject to no damage having been caused to the building or overrunning of the contracted timings.

PUBLIC LIABILITY INSURANCE

Somerset House require all clients to have £10 million public liability insurance.

WI-FI

Complimentary browsing Wi-Fi of 15Mbps is included within your hire. Upgrades are available at an additional cost.

SITE ACTIVITY

As an arts and culture centre open to the public, we have a very exciting and constantly expanding public programme, which sees lots of different installations, exhibitions, artwork, and public events all over the site. It is a huge part of what makes us Somerset House. There are also occasions where essential works need to take place on the building and these instances are out of our control.

Our iconic ice rink will be in situ and open to the public in the Edmond J. Safra Fountain Court over your event date, creating a wonderful atmosphere on site. Opportunities to enhance your event with ice skating are available.

OPT-IN TO SUPPORT THE YOUNG TALENT FUND

Somerset House's Young Talent Fund supports the next generation of early career creatives and artists to fulfil their potential, by providing financial relief to resident artists and opportunities to under-represented young people aged 18-25.

Since the emergence of the pandemic, the Young Talent Fund has become critical in allowing us to break down barriers and tackle inequality. The fund directly supports Upgrade Yourself, offering digital training, networking, upskilling, and a pioneering London Living Wage paid industry placement scheme for young people; and Somerset House's Studios', providing the space and conditions in which over a hundred pioneering interdisciplinary artists can thrive.

If you would like to support this fund by making a donation please speak to a member of our team. Your support will help to secure a future for our creative community for many years to come. Thank you.

WHAT IS SOMERSET HOUSE?

Our Building

Over **500,000**
SQ FT
of Grade I listed architecture

Our Visitors

OVER
2.6 MILLION
VISITORS

Our Residents

Creative Enterprise
450+
resident organisation

Artists & Makers
400+ 

2,500+
People working
in the creative
industries

Somerset House
Studios artists and
Makerversity
members

Our Neighbours

THE
COURTAULD and
KING'S
COLLEGE LONDON

Our People

100 Staff
100+ Volunteers

DIVERSITY & INCLUSION

We are committed to building a diverse and inclusive community reflecting the diversity of our society. A community where everyone feels valued, where their contribution matters and where they can reach their full potential, irrespective of their background, identity or circumstances. We aim to ensure the diversity of all our staff reflects our society as fully as possible. Similarly, we aim to be home to a resident community of artists and enterprises from an equally diverse range of situations, backgrounds, and disciplines. Ongoing initiatives include running the Black Business Incubator.

ANTI-RACISM

Somerset House is committed to being actively anti-racist and publicly releases updates on the actions it is taking in relation to its Anti-Racism Pledge every six months. We recognise that this is a journey. We have divided our focus into 5 key areas: History, Community, Workforce & Recruitment, Language and Procedures & Policy. A comprehensive list of our current actions can be found [here](#).

SUSTAINABILITY

We are actively responding to environmental issues, and aim to be cultural leaders in championing sustainability, both through the practical management of our Grade I listed historical site and thematically as part of our year round cultural programme. A combined cooling, heating and power plant generates over 50% of all electricity used on-site. The heat generated by this process then goes to warm the building during winter and cool it in summer, dramatically reducing our CO2 emissions. By working together with visitors and the 2500+ resident creative community, we are committed to collectively reducing our impact on the planet. You can download our sustainability booklet, featuring top tips on how to host a sustainable event at Somerset House, [here](#).

LONDON LIVING WAGE EMPLOYER

Somerset House is proud to be an accredited Living Wage payer. We pay all of our staff and sub-contractors the London Living Wage.





Download our Venue Hire Brochure [here](#)

View our virtual tours: [360 Footage of Somerset House Event Spaces](#)

CONTACT US

events@somersethouse.org.uk

+44 (0)20 7845 4618

somersethouse.org.uk/venue-hire

OUR LOCATION

Somerset House, Strand, London WC2R 1LA

BY LONDON UNDERGROUND

Temple (Circle & District lines; 250m, 5 mins)

Covent Garden (Piccadilly line; 650m, 8 mins)

Charing Cross (Bakerloo & Northern lines; 700m, 10 mins)

Embankment (Circle & District lines; 700m, 10 mins)

Waterloo (Bakerloo, Waterloo & City, Jubilee & Northern lines; 800m, 11 mins)

BY RAIL

Charing Cross (700m, 10 mins)

Blackfriars (1km, 13 mins)

Waterloo (1km, 13 mins)

BY RIVER

River bus services RB1, RB2 and RB6 all stop at Embankment Pier, roughly 600m from Somerset House