



34 BLOOMSBURY

34





# 34 BLOOMSBURY

TIMELESS ELEGANCE ———  
MEETS CONTEMPORARY STYLE

Located in the heart of central London, 34 Bloomsbury is a newly renovated 1850's Georgian townhouse. Combining an elegant contemporary style with a rich heritage, the space offers four rooms across two floors, as well as an urban garden to host a variety of events.

The Bloomsbury district has historically been home to many leading literary and intellectual figures and remains so today. Most notably the famous 'Bloomsbury Set', created in the 20th century, was a group of artists, writers and intellectuals who championed a new approach to art and literature and discussed social topics which were way ahead of their time. They were also known to host the best parties in the neighbourhood – a tradition which 34 Bloomsbury aims to continue.



# THE SPACES

Bloomsbury has an incredibly rich history, one that we've loved incorporating into our event space by maintaining the building's stunning period features and paying homage to Bloomsbury's influential and historical women. Our event spaces have been lovingly named after female historical figures who were born or lived in the Bloomsbury area and made great contributions to society.

34 Bloomsbury is made up of four event spaces covering two floors, in addition to a sought after garden space. We also have two event support rooms in the basement, which can provide additional space to your event either as back of house or as an extension of the event. Please get in touch for more details on these.

The newly renovated venue has been finished to an incredibly high standard and includes state-of-the-art equipment. All rooms have complimentary high-speed WIFI and built-in Sonos system in each room.

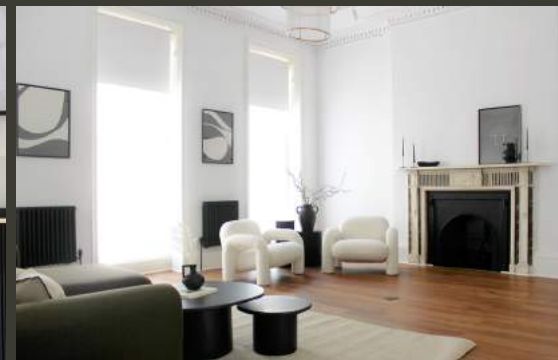
Our four event spaces available to hire are:

THE OTTO ROOM

THE MORRELL ROOM

THE WOOLF ROOM

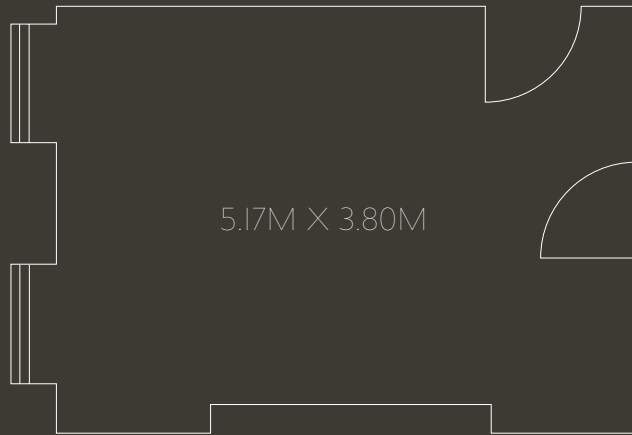
THE EVELYN ROOM







# THE OTTO ROOM



Located on the ground floor of the house, and overlooking the vibrant Bloomsbury Street, The Otto Room is the perfect option for smaller events.

The space is named after Lady Ottoline-Morrell, an English aristocrat known for hosting gatherings within intellectual and artistic circles.

The Otto Room is offered unfurnished and it can accommodate up to 20 guests standing. For larger gatherings of up to 75 guests standing, it can be hired with the connecting Morrell Room.

## CAPACITY

BOARDROOM:  
12

THEATRE:  
15

CLASSROOM:  
N/A

DINING:  
12

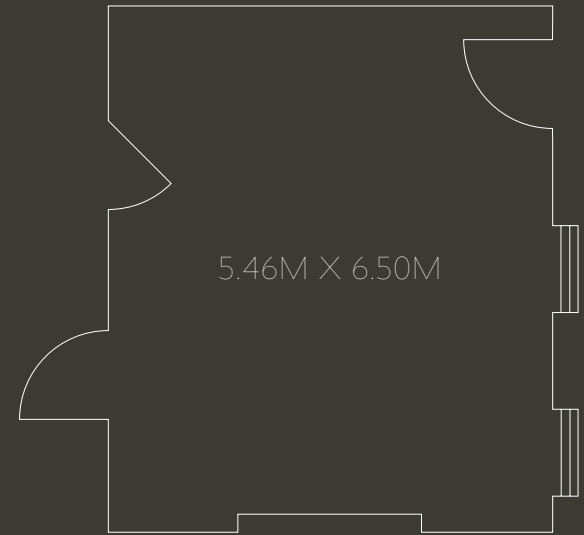
STANDING:  
20



# THE MORRELL ROOM

Named after Lady Ottoline-Morrell, an English aristocrat and socialite, this space is a blank canvas full of natural daylight and overlooks our urban outdoor garden. The Morrell Room is the perfect space for a variety of events, from meetings and product launches to exhibitions and social gatherings.

This space is offered unfurnished and can accommodate up to 45 guests for a standing reception. For larger occasions and parties, The Otto & Morrell Rooms can be combined to host up to 75 guests standing.



## CAPACITY

BOARDROOM:  
18 ONE TABLE

THEATRE:  
42

CLASSROOM:  
18

DINING:  
32 LONG TABLE /  
36 ROUND TABLES

STANDING:  
45



# THE WOOLF ROOM

Set on the first floor, The Woolf Room is named after one of the most important 20th century writers and women rights advocate, Virginia Woolf, who was also one of the founders of the 'Bloomsbury Set'.

With floor to ceiling windows providing plenty of daylight, our fully equipped boardroom can sit up to 10 guests and boasts a 75inch TV screen, video conferencing facilities and SONOS sound system.



**CAPACITY**

BOARDROOM:

10

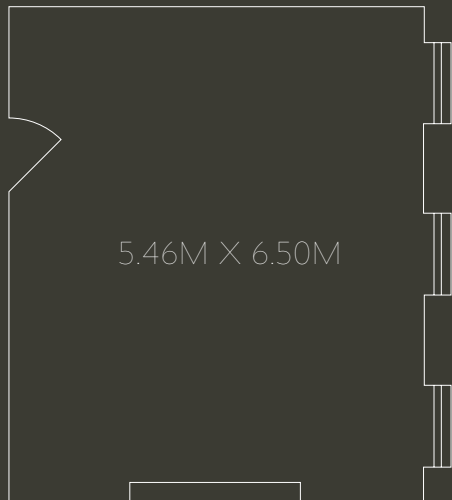




# THE EVELYN ROOM

The Evelyn Room has been inspired by Evelyn Sharp, a writer, pacifist and feminist who was a key figure for the Suffragettes movement in the 20th century.

Flooded with natural daylight, The Evelyn Room is located on the first floor and overlooks the garden. The space is offered with unique contemporary lounge style furniture and can host up to 45 guests standing.



## CAPACITY

BOARDROOM:  
18 ONE TABLE

THEATRE:  
42

CLASSROOM:  
18

DINING:  
32 LONG TABLE /  
36 ROUND TABLES

STANDING:  
45



# THE GARDEN

A sought after feature of any central London venue, our garden can be hired as an additional space to offer your guests that something more, whether it's for an al-fresco drink in the sun or a cosy winter cocktail.

COMING SOON

SUMMER 2023





# EXCLUSIVE — HIRE

For bigger events, parties or weddings, 34 Bloomsbury and the Garden can be hired exclusively for up to 110 guests.

# ADDITIONAL SERVICES

We'd be happy to help with any other logistics for your event; the following can be provided by us or one of our preferred suppliers (price on request).

EVENT STYLING

EVENT MANAGEMENT

ONSITE PRODUCTION

CATERING

ENTERTAINMENT

SECURITY

CLEANING



# CONTACT

FOR ENQUIRIES ———  
OR MORE INFORMATION

SOFIA MANHOSO — SALES & VENUE MANAGER

34 BLOOMSBURY STREET, LONDON WC1B 3QJ

HELLO@34BLOOMSBURY.COM

07946 545 606

020 7287 4634



@34BLOOMSBURY



WWW.34BLOOMSBURY.COM



WWW.LINKEDIN.COM/COMPANY/34-BLOOMSBURY/

