

T H E
B L O C K

T

he Block is a sophisticated event space recently built in a contemporary style inspired by industrial structures.

The building is an urban sustainable venue that covers 16,500 sq ft of space, over the ground and lower ground floors and is an ideal for a variety of events. Set between King's Cross and Old Street, it is ideally positioned close to Angel Underground Station.





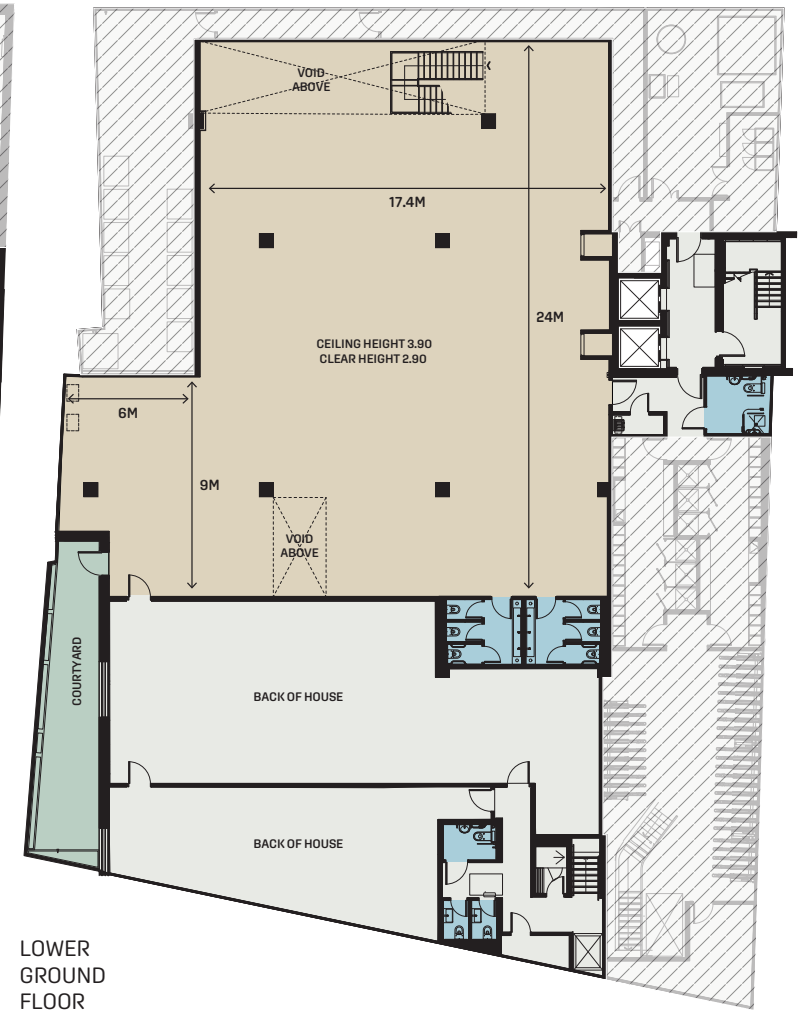
A

perfect venue for
daytime conference
leading into a seated
lunch, dinner, or awards.



FLOORPLANS

	GROUND FLOOR	LOWER GROUND FLOOR
RECEPTION	500	400
DINNER	400	400
DINNER WITH DANCE FLOOR	400	350
CONFERENCE	400	400
EVENT SPACE SQ FT	8,220	4,901
EVENT SPACE SQ M	764	455



DRY HIRE

You are able to hire this exciting building bringing in suppliers of your choice (subject to them being known by the management). Please note that The Block does not take any commissions from those suppliers coming in.

07:00 – 12:00

£4,000

14:00 – 02:00

£10,000

08:00 – 02:00

£12,500

Music and bars close at 23:30 and guests to be clear by midnight.

Late licenses are available on request at £1,200 per hour.

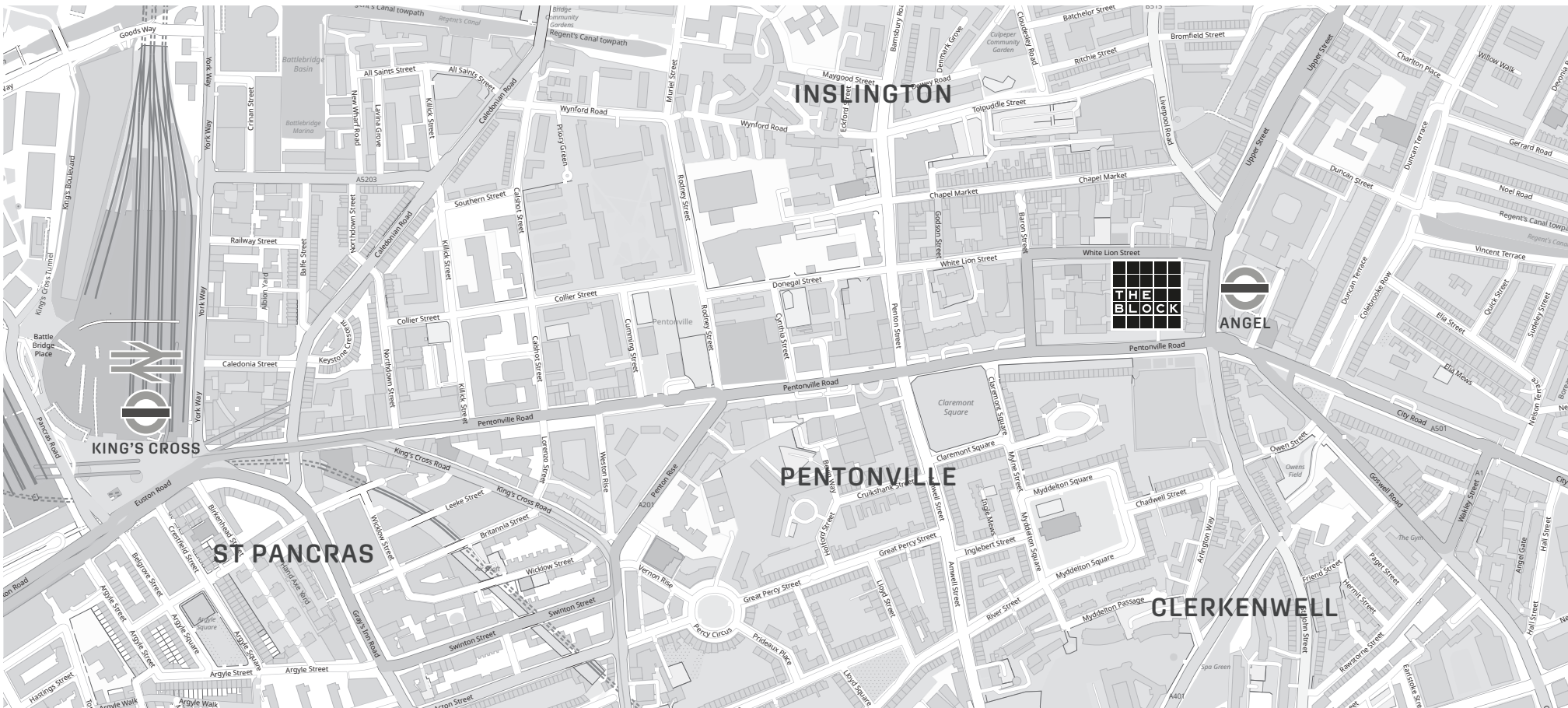
All prices quoted are subject to VAT.

The times shown are the full occupancy times for the build, guest times and de-rig of your events.

BESPOKE

Alternatively we are delighted to produce your event for you and offer in house packages.

Please contact events@the-belgravia.com for more information or with a specific brief.



10 WHITE LION STREET
LONDON N1 9PD
+44 20 3148 6560
EVENTS@THE-BLOCKVENUE.COM
THE-BLOCKVENUE.COM