



THE LONDONER  
LEICESTER SQ.



THE WORLD'S FIRST SUPER BOUTIQUE HOTEL



Picture a place;  
An extraordinary place...







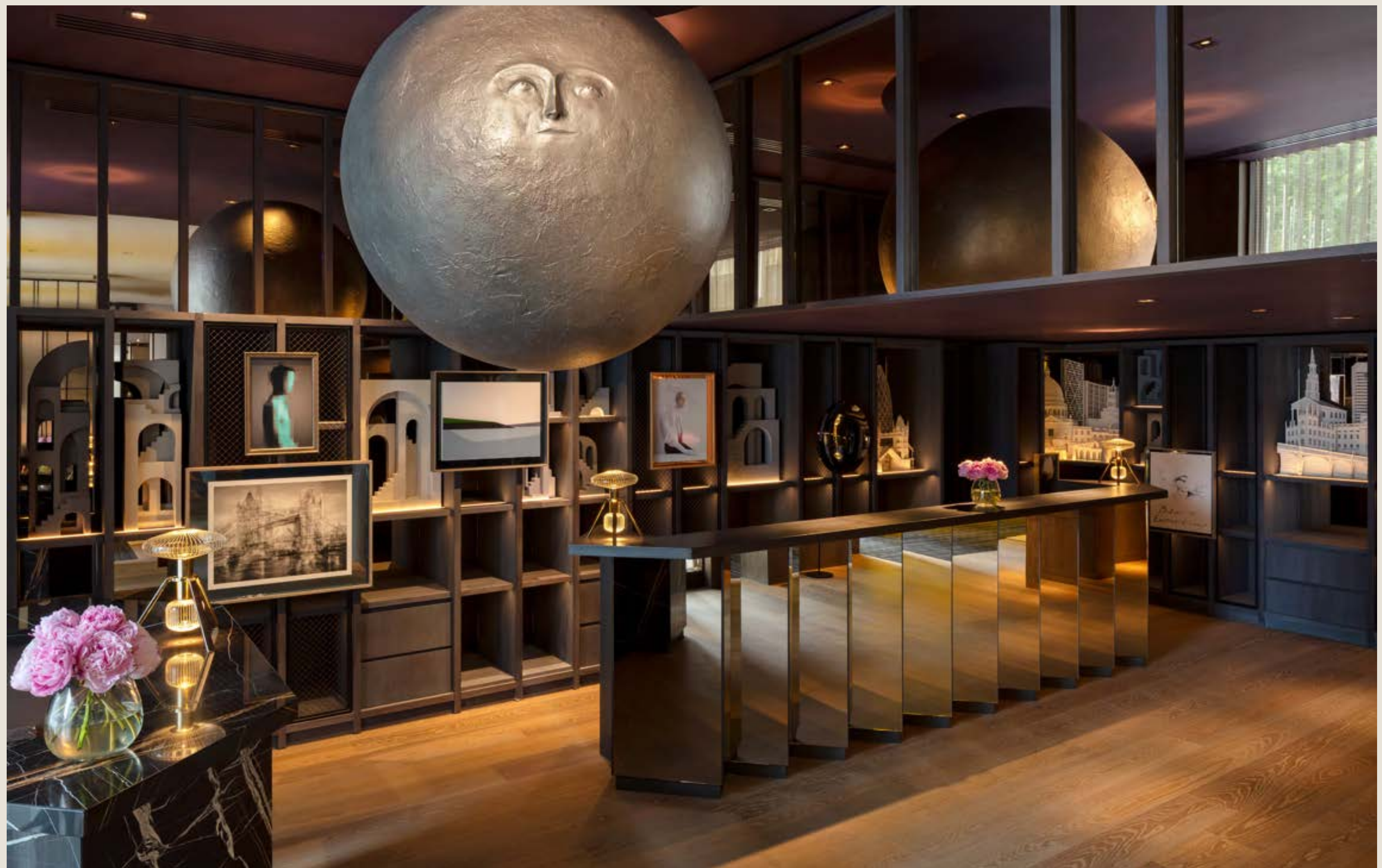
# THE WORLD'S FIRST SUPER BOUTIQUE HOTEL

Welcome to an urban resort  
in the heart of the West End.

Individual, intimate, eclectic, and curated; yet staggering in scale, The Londoner is a new hotel category of one. A perfectly engineered collection of spaces, tastes and textures brought to life over 16 storeys on London's legendary Leicester Square.

The Londoner is home to 350 exquisite bedrooms and suites, six concept eateries and bars, including a rooftop lounge and tavern, a private guest residence, an urban wellness retreat, seven inspiring meeting spaces and a stunning ballroom for up to 850 guests.

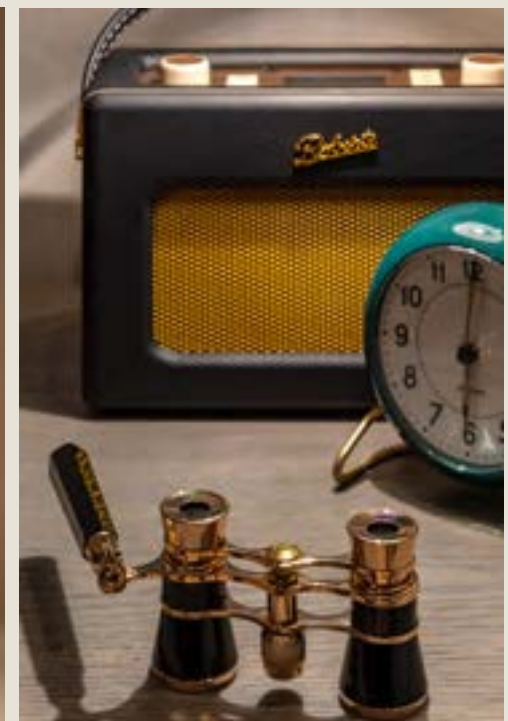
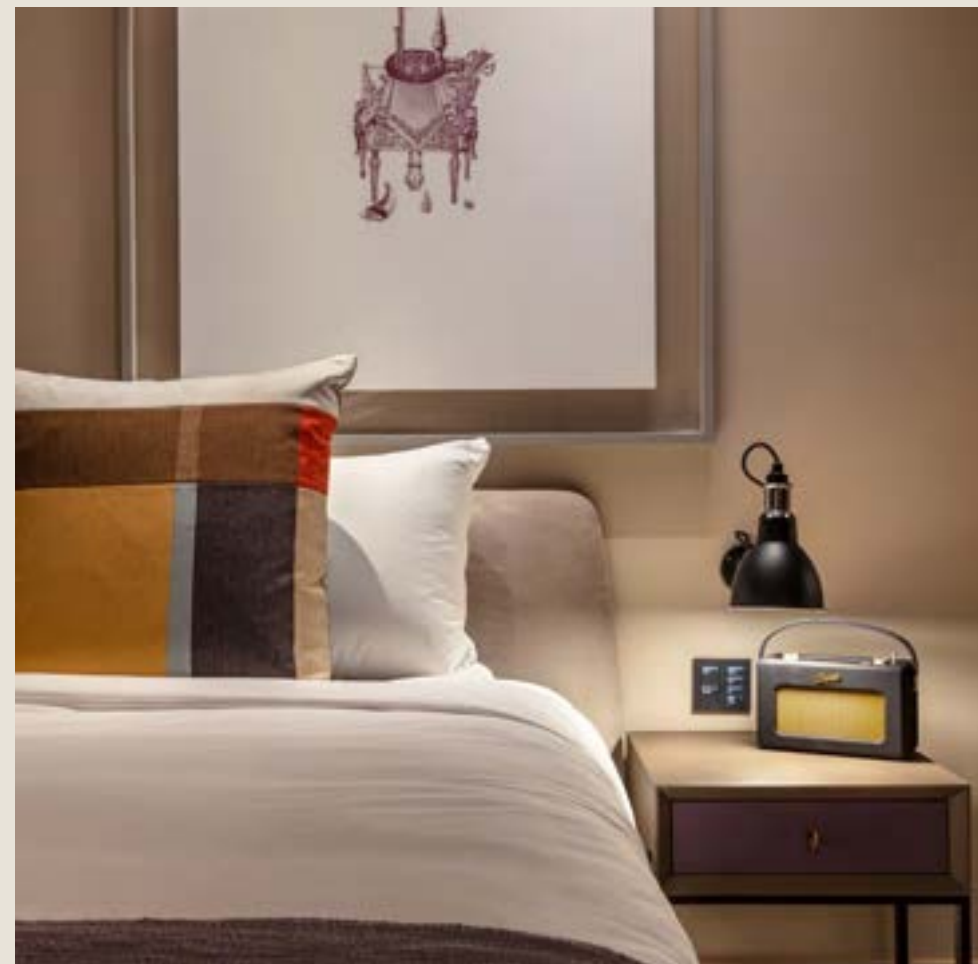






# A HOME IN THE CITY

Loft-inspired and open plan, every Londoner room balances material and spatial sensibility with a calming colour palette and residential panelling to make guests feel at home. A bespoke Yabu Pushelberg design with curated artworks and objets d'art offset a unique and eclectic London view.



^  
From top to bottom right  
Tower Penthouse Suite lounge,  
Corner suite bedroom,  
Roberts Bluetooth radio  
and speakers, binoculars





^ Above and left  
Deluxe King Room,  
Signature Suite lounge



> From top to bottom right  
Tower Penthouse Suite,  
Bedroom entrance, Corner  
Suite, Bedroom bathrooms





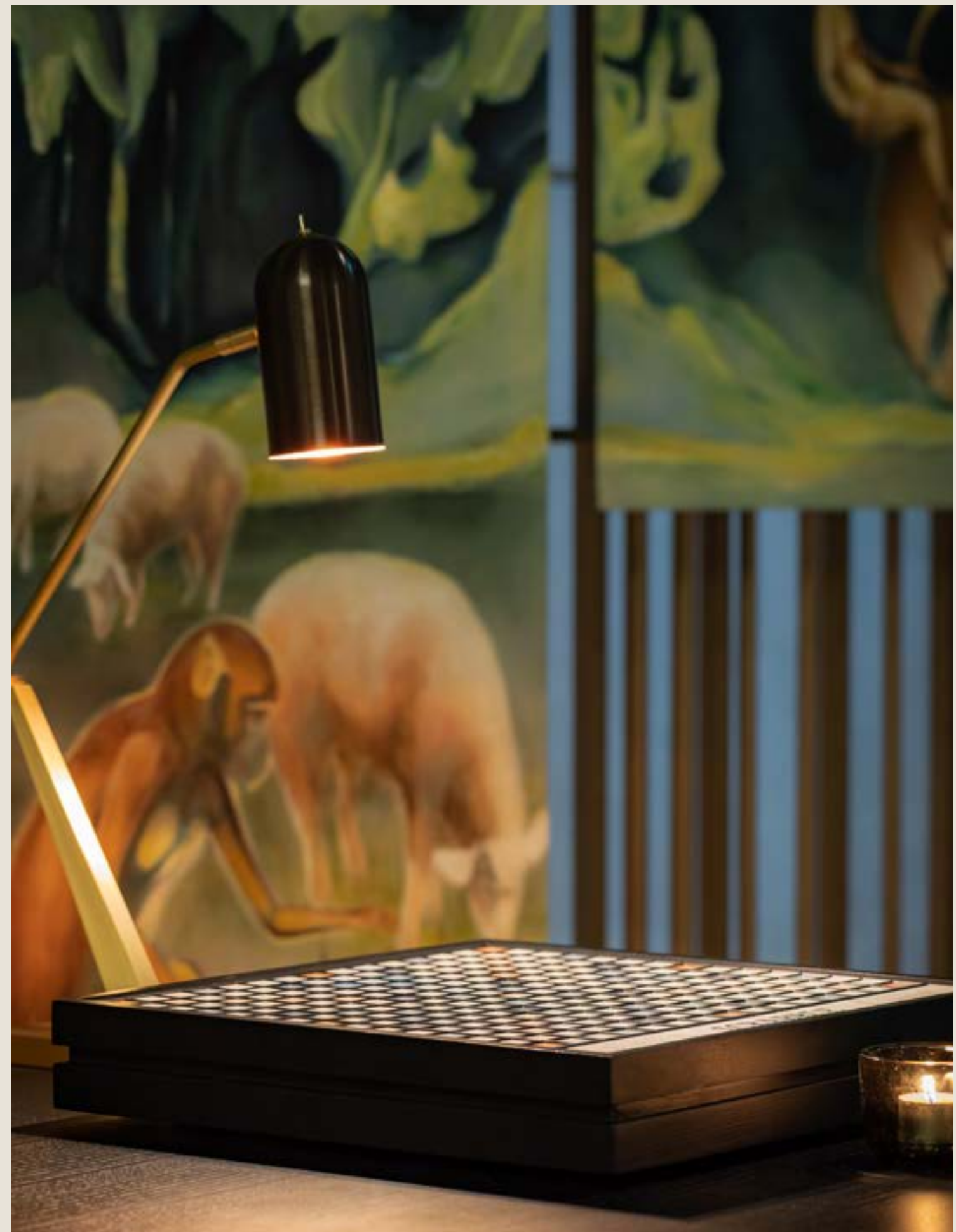
# LOSE YOURSELF IN THE VIEW

Each Londoner room offers a unique and immersive view of the surrounding city. From grand squares and elegant rooftops to the electric neon bustle of teeming theatreland streets, a unique shade of London awaits to inspire you.

# BEAUTY IS IN THE EYE OF THE KEYHOLDER

A great hotel is a conduit of culture.  
The essence of culture is art.  
Everywhere you look, there is something  
to be discovered. The Londoner is a  
treasure trove of bold and beautiful art,  
design and architectural wonder.

➤  
Right  
The Residence





# WELCOME TO THE RESIDENCE

A collection of three beautifully designed spaces for hotel residents only.

The Residence has been curated to meet our guests' every work and relaxation needs, with complimentary antipasti, soft drinks, tea and coffee served throughout the day.



>  
Right  
The Y Bar, The Drawing Room,  
The Whisky Room





# THE DRAWING ROOM

Experience a contemporary take on the comforts of the classic British living room.



# THE Y BAR

Enjoy the alluring change from a place to work in the day to a nightly scene for socialising, cocktails and light bites.







# THE WHISKY ROOM

From the renowned to the incredibly rare, discover the depths of The Londoner's whisky collection via a secret door through the powder rooms.



# THE COURTYARD

Set in the heart of the hotel and available only to hotel guests, lofty and tranquil surroundings are made perfect for experiences such as sunrise yoga and Pilates.







# A STOREY OF WELLNESS

Welcome to The Retreat, an urban sanctuary of revitalisation that disconnects Londoners from London.

## **The Retreat**

A pool surrounded by private cabanas offers personalised treatments by our expert therapists, complemented by a gentlemen's barber and hair & nail salon for guests to feel good and look sharp.

## **The Gym**

Specifically designed to encourage high-intensive training and promote ambitious results, The Gym has partnered with Technogym to provide state-of-the-art equipment with an adjoining studio for classes.

## **Refuel at The Retreat**

Created to supplement The Retreat's spa treatments, Refuel is a results-driven superfood and drinks clinic that aims to nourish and promote a holistic state of wellbeing.







◀  
Top to bottom  
Refuel, The Gym, Tisanes,  
Papaya, avocado and feta  
cheese salad, Refuel juices,  
poolside cabanas, The gym



# THE DINING SCENE

The Londoner's restaurants and bars reflect the city's eclectic dining scene. Elegant Japanese cuisine features alongside a contemporary take on the French Mediterranean. Bright and airy spaces for breakfast and brunch contrast intimate cocktail and Champagne bars, whilst the rooftop sets the scene for spectacular gazing and grazing.







## 8 AT THE LONDONER

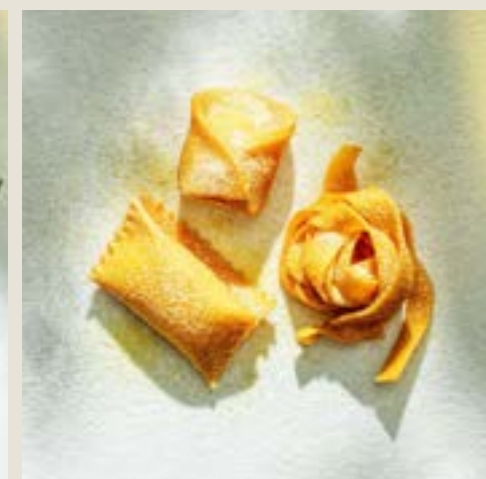
A decadent rooftop izakaya lounge that reimagines the informal and traditional Japanese style of dining and drinking in three stunning settings.





# WHITCOMB'S

The Londoner's signature restaurant is a place where light, artistic surroundings meet cuisine led by exclusive, seasonal ingredients. Welcome to a corner of the French Mediterranean, with a terrace overlooking Leicester Square.







# THE STAGE

Step into the limelight of The Stage, where the drama unfolds with a spectacular programme dedicated to Champagne and life's great delights.





# JOSHUA'S TAVERN

A homage to Sir Joshua Reynolds, 18th century portrait artist and former Leicester Square resident, this neighbourhood gastro bar serves terroir-led Gintonicas, a refreshing draught beer selection, and a contemporary bill of fare with tavern tid-bits.





# EVENTS AT THE LONDONER

The Londoner experience encompasses intimacy with unexpected capacities and dimensions, matching the logistical and technological ability of the most dedicated meetings and events venues in the world. Discover a new offering that welcomes creativity, purpose-built to entertain and excite.





# THE BALLROOM

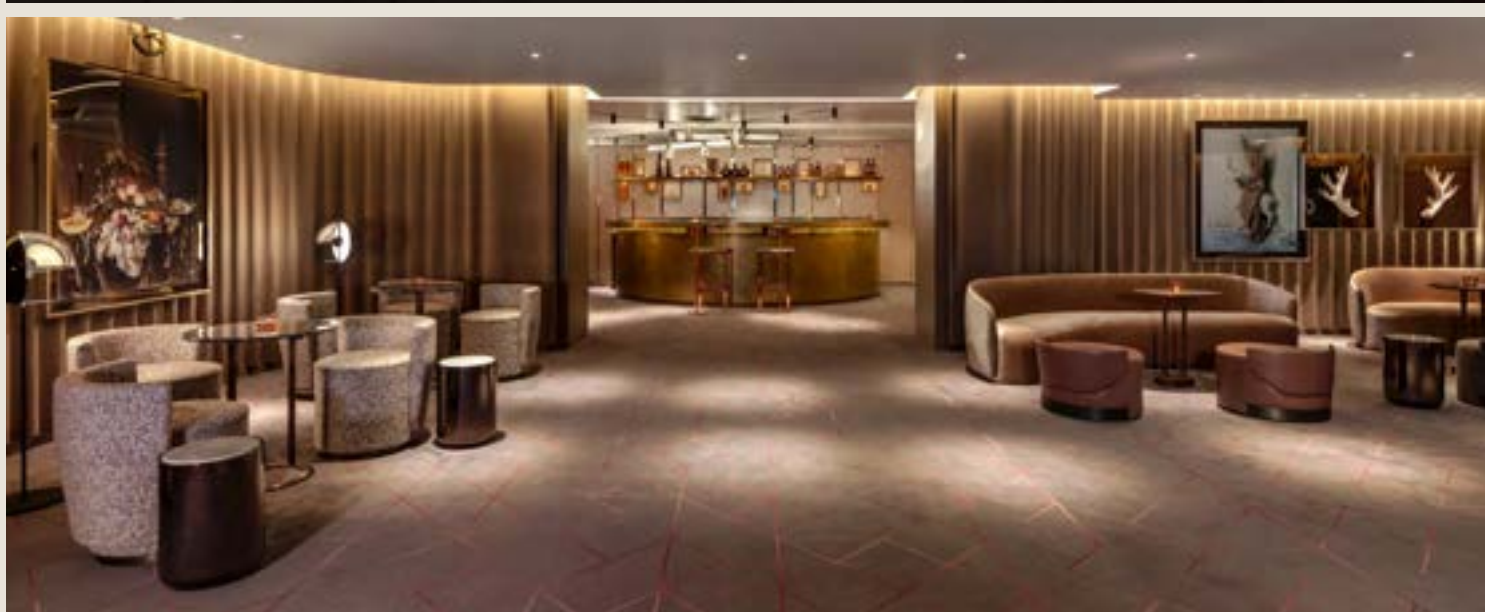
Launch parties. Inspiring conferences. Extravagant gala nights. Designed with big events in mind, The Ballroom is a state-of-the-art multifunctional space that offers rare opportunities and experienced event planners.

Capacities	Theatre	Classroom	Boardroom	Cabaret	Lunch/Dinner	Reception
Ballroom	708	432	-	336	600	850
Ballroom A	367	216	48	216	300	350
Ballroom B	328	216	42	144	276	310
Ballroom Foyer	-	-	-	-	-	200

Dimensions	Area		Length		Width		Height	
	sq. m	sq. ft	m	ft	m	ft	m	ft
Ballroom	566	6,093	35.6	116' 8"	15.9	52' 2"	5.8	19'
Ballroom A	289	3,115	18.2	59' 7"	15.9	52' 2"	5.8	19'
Ballroom B	272	2,927	17.1	56'1"	15.9	52' 2"	5.8	19'
Ballroom Foyer	237	2,551	-	-	-	-	-	-











# THE GREEN ROOM

With a private bar, luscious fabrics and rich colour palettes, The Green Room is a dream for the elite host. A beautiful space perfect for receptions, meetings and pre-function gatherings.

Capacities	Theatre	Classroom	Boardroom	Cabaret	Lunch/dinner	U-shape	Reception
The Green Room	76	30	28	24	40	20	180

Dimensions	Area		Length		Width		Height	
	sq. m	sq. ft	m	ft	m	ft	m	ft
The Green Room	299	3,214	23.7	77' 8"	12.6	41' 3"	2.2	7' 2"







# THE GALLERY

Partnered with London’s most iconic art institutions, The Gallery presents a collection of seven meeting rooms designed to quietly inspire. The rooms are linked to a spacious foyer, with the ability to be customised and configured to suit various needs.

Capacities	Theatre	Classroom	Boardroom	U-shape	Cabaret	Lunch/Dinner	Reception
The National Gallery	20	9	8	-	-	8	22
Somerset House	20	9	8	-	-	8	22
The National Gallery + Somerset House	48	21	16	27	-	16	44
Royal Academy of Arts	64	36	24	28	24	36	60
Tate Britain	30	24	20	20	16	24	38
Hayward Gallery	34	21	20	16	16	24	38
Tate Britain + Hayward Gallery	82	56	40	44	32	48	76
Serpentine Gallery	-	-	16	-	-	-	-
Maddox Gallery	-	-	16	-	-	-	-

Dimensions	Area		Length		Width		Height	
	sq. m	sq. ft	m	ft	m	ft	m	ft
The National Gallery	20	215	6.2	20' 4"	3.2	10' 6"	3.5	11' 6"
Somerset House	20	215	6.4	21'	3.2	10' 6"	3.5	11' 6"
The National Gallery + Somerset House	40	431	12.6	41' 4"	3.2	10' 6"	3.5	11' 6"
Royal Academy of Arts	54	581	9.9	32' 6"	5.8	19'	3.5	11' 6"
Tate Britain	34	366	7.9	25' 11"	4.2	13' 9"	3.5	11' 6"
Hayward Gallery	34	366	7.9	25' 11"	4.2	13' 9"	3.5	11' 6"
Tate Britain + Hayward Gallery	68	732	15.8	51' 10"	4.2	13' 9"	3.5	11' 6"
Serpentine Gallery	35	377	8.4	27' 7"	4.3	14' 1"	3.5	11' 6"
Maddox Gallery	39	420	8.9	29' 2"	4.6	15' 1"	3.5	11' 6"

Breakout areas	Standing	Area		Length		Width		Height	
	guests	sq.m	sq.m	m	ft	m	ft	m	ft
Gallery Foyer	160	162	1,744	16. 8	55'	12.4	40' 6"	3.5	11' 5"
Gallery	275	256	2,756	25.8	84' 5"	12.4	40' 6"	-	-







# SCREENING ROOMS

Unleash the power of cinema to turn ordinary presentations into inspirational think pieces. Recline. Relax. Switch off. The Londoner presents two screening rooms for an intimate and individual experience, powered by the technology of Odeon.

**ODEON**  
LUXE  
WEST END



# A LIGHTER FOOTPRINT

From the initial securing of The Green Loan to our ‘Excellent’ BREEAM rating, our mission has helped to future-proof the concept of The Londoner whilst driving change by installing innovative technologies.

**IMC**  
Waste Station

**EXCELLENT**  
BREEAM rating\*

**30%**  
less carbon usage  
than regulations  
demand

**HEATSAVR**  
Liquid Pool Cover

**MONIKA**  
Temperature  
Monitoring

**DIGITAL**  
Room keys

**CHP & LED**  
Lighting

Building Research Establishment  
Environmental Assessment Method





# DISTINCTLY LONDON

The Londoner is positioned where the four corners of London meet. Set on the south west corner of Leicester Square, guests enjoy the perfect launchpad from which to explore each of the capital's unique neighbourhoods.

By putting our hands in the earth and building a hotel experience on one of London's most iconic squares, The Londoner has stitched itself into the fabric of London to reflect the truly brilliant collisions, contradictions and juxtaposition of this extraordinary city.



# A HERITAGE OF HOSTING

The Londoner is owned and operated by Edwardian Hotels London, one of the UK's most dynamic hotel and restaurant groups with more than 40 years' experience hosting guests.







# AT A GLANCE

## 350 Bedrooms & Suites

- 10 Queen Rooms
- 56 King Rooms
- 137 Deluxe King Rooms
- 110 Deluxe King City View Rooms
- 8 Junior Suites
- 20 Corner Suites
- 5 Capital Suites
- 2 Signature Suites
- The Tower Penthouse Suite

## Exclusively for our guests

- The Residence, including  
The Whisky Room, The Y Bar  
and The Drawing Room
- The Courtyard

## Meeting & Events Areas

- The Ballroom
- The Green Room
- The Gallery's 7 meeting rooms
- 2 Screening rooms
- 33 Syndicate rooms

## Restaurants & Bars

- Whitcomb's
- The Stage
- Joshua's Tavern
- 8 at The Londoner

## The Retreat

- Gym
- Swimming pool
- Hydropool
- Sauna & Steam
- Cabanas & treatment rooms
- Refuel superfood clinic
- Spa bar
- Hair & nail salon
- Barbershop



# THE LONDONER

**For hotel enquiries:**

reservations@thelondoner.com  
+44 (0)20 7451 0102

**For meeting or event enquiries:**

events@thelondoner.com  
+44 (0)20 7451 0188

**For press enquiries:**

press@thelondoner.com

**Website**

thelondoner.com







THE LONDONER

LEICESTER SQ.

38 Leicester Square  
London WC2H 7DX  
+44 (0)20 7451 0101  
[thelondoner.com](http://thelondoner.com)